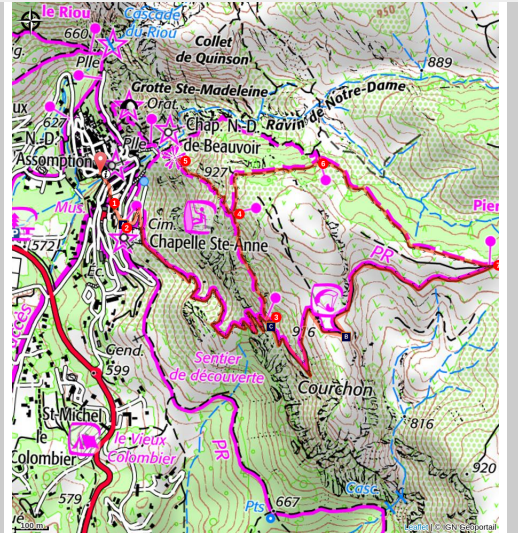


The Courchon path

Moustiers-Sainte-Marie



En admirant le lac de Sainte Croix (©Stefano Blanc - PNR Verdon)

The Courchon path is one of the most grandiose, the most daring and the best preserved vestiges of a medieval road.

Since 1981, Moustiers-Sainte-Marie is ranked one of the most beautiful villages in France. The pretty Courchon path makes it possible to make the tour of Moustiers by the ravine of Notre-Dame where is suspended the Etoile de Moustiers and to take the Roman way. All while enjoying beautiful views, including Lake St. Croix, le plateau de Valensole but also Mont Ventoux and Sainte-Baume.

Useful information

Practice : WALKING

Duration : 3 h

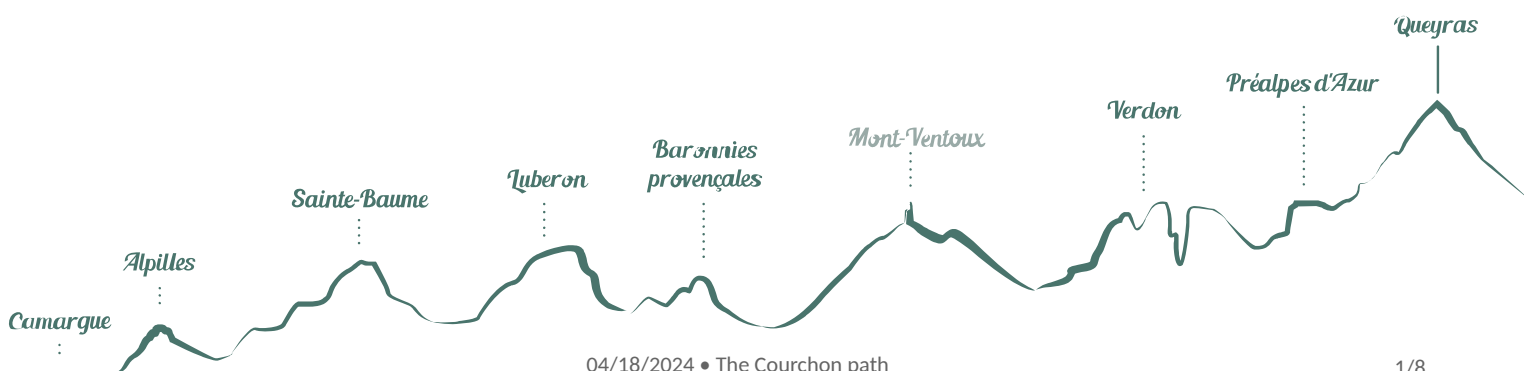
Length : 6.2 km

Trek ascent : 446 m

Difficulty : Medium

Type : Boucle

Themes : A lookout, a viewpoint,
Heritage and history, Know-how



Trek

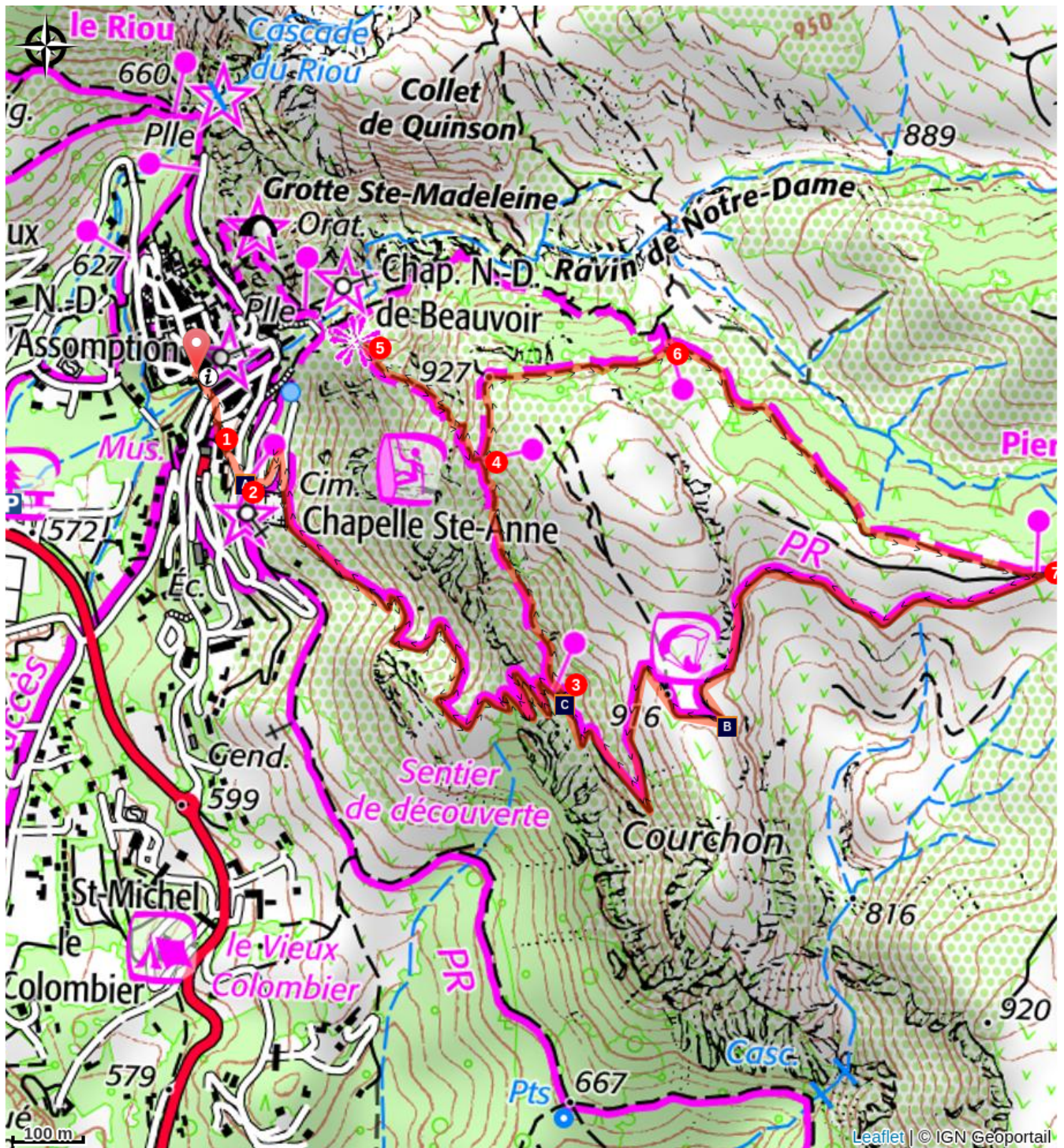
Departure : Village center of Moustiers


Arrival : Village center of Moustiers

Markings :  PR

- 1** - Start the hike by climbing to the Church of Notre-Dame-de-Beauvoir. Climb by the cobbled staircase and lined with small oratories.
- 2** - Once at the Notre-Dame chapel, go down a few meters to take the path on the right (yellow markings) indicated chemin de la chaine. Climb the steep path until you reach a first cairn, follow the indication ravin de Notre-Dame. At the next intersection, 100m further follow baisse de Courchon.
- 3** - Once to the baisse of Courchon, (post with arrow 28) turn right on the Roman road, pass a small pass and then down on Moustiers by the Roman road.

On your path...



 The earthenware from Moustiers (A)

 View from above (B)

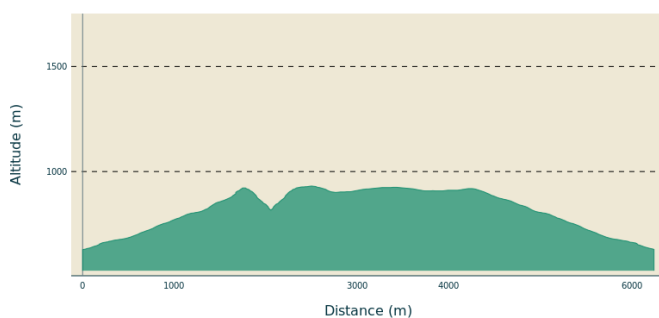
 The medieval way (C)

All useful information

AdVICES

Avoid the hot summer, take 2 liters of water and hiking shoes (avoid rain slippery slabs).

Altimetric profile



Min elevation 628 m
Max elevation 931 m

Transports

Limitons les déplacements en voiture, pensons aux transports en commun ! - **Prenez la ligne régionale BV1bis entre Riez et Castellane** du 1 mai au 30 septembre Depuis Riez, départ 9h05, 10h35 retour 13h50, et 17h15, 19h40 (E1) du 1/07/22 au 31/08/22 Depuis Castellane, départ à 7h15, retour 16h35 et 19h30 (E1) du 1/07/22 au 31/08/22

Advised parking

Parking du stade (gratuit) ou des haut de Moustiers (payant)

i Information desks

House of the Verdon Regional Nature Park



Domaine de Valx, 04360 Moustiers-Sainte-Marie

info@parcduverdon.fr

Tel : +33 (0)4 92 74 68 00

<http://www.parcduverdon.fr/>

OT Moustiers Sainte-Marie

Maison de Lucie - Place de l'Eglise, 04360 Moustiers Sainte-Marie

info@moustiers.fr

Tel : +33 (0)4 92 74 67 84

<http://www.moustiers.eu/>

On your path...



The earthenware from Moustiers (A)

The fame of Moustiers is not only due to its site, as unique as it is. For many connoisseurs, Moustiers is synonymous of pottery and ancient coins made from "Moustiers", which are among the finest earthenware pieces in France and are highly sought after by connoisseurs. Many museums, many castles or aristocratic houses have one or more older pieces from Moustiers. One can admire them at the Sèvres Museum, the Museum of Lyon and the Louvre.

Attribution : Stefano Blanc - PNR Verdon



View from above (B)

At the top of the trail you can enjoy beautiful views, including Lake St. Croix on the left, the Valensole plateau but also Mont Ventoux and Sainte-Baume.

Attribution : Laura Chastel - PNR Verdon



The medieval way (C)

Without having the rank of royal road, in the eighteenth century it was an important communication route that connected Aix to Castellane. A battle took place on this Courchon in December 1746, one of the battles of the war of succession of Austria which earned Moustiers the fact to be occupied for a few days by the "pandors" (a word which designated the Austrian soldiers). This historic path, one of the jewels of the Provençal heritage, fruit of the ingenuity and work of the ancients is nevertheless fragile.

Attribution : Laura Chastel - PNR Verdon



- En aucun cas les auteurs des contenus de ce site ne sauraient être tenus pour responsables de problèmes ou d'accidents sur les itinéraires cités.
- Cependant, nous comptons sur vous pour signaler toutes contradictions importantes entre cette fiche et le terrain.
- Pensez également à signaler les éventuels problèmes rencontrés pendant votre balade sur <http://sentinelles.sportsdenature.fr> (erreur de balisage, panneau défectueux, pollution, conflit d'usages...).
- La vente de cette fiche est autorisée au coût d'impression.
- Ne pas jeter dans la nature.

L'outil Geotrek a été financé par l'Union européenne, le Parc national des Ecrins et le Parc national du Mercantour.

Le projet Chemins des Parcs est financé par la Région Provence-Alpes-Côte-d'Azur et les Parcs naturels régionaux des Alpilles, de Camargue, du Luberon, du Queyras et du Verdon.

Ce projet partenarial rassemble également le Comité Régional du Tourisme, les agences départementales de développement touristique, les offices de tourisme et les syndicats d'initiative.

- The authors of this website will in no case be held responsible for problems or accidents on the routes mentioned.
- We count on you to point out any inconsistency between this content and the field itineraries
- Please report any problems encountered on the routes (route marking problems, defective panels, pollution, conflict of uses ...) on <http://sentinelles.sportsdenature.fr>
- The sale of this sheet is authorized at the cost of printing
- Please don't litter

The Geotrek tool was funded by the European Union, the Ecrins National Park and the Mercantour National Park.

The Chemins des Parcs project is funded by the Provence-Alpes-Côte-d'Azur Region and the regional nature parks of Alpilles, Camargue, Luberon, Queyras and the Verdon.

This project was developed in partnership with the Regional Tourism Committee, the departmental tourist development agencies, and tourist offices.

www.cheminsdesparcs.fr

*Tours et détours dans les Parcs naturels régionaux
de Provence-Alpes-Côte d'Azur*

Avec le soutien de

