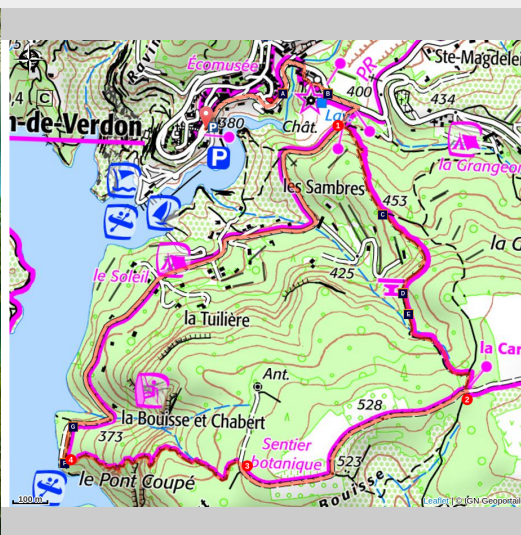


## The Botanical Trail

Esparron-de-Verdon



Depuis le sentier botanique (©Stefano Blanc - PNR Verdon)

*I love this rich and pleasant stroll throughout the year taking advantage of the landscapes especially in spring with the maximum flowering.*

Take time to discover the various facets of vegetation. Throughout the route you will find signs naming the main species of trees and shrubs. Be careful and enjoy them without damaging, please do not pick them, such seemingly common species can be rare and protected. This is the case of the fritillaria here present, which is found only in the Southern Alps. A beautiful photo lasts longer. Stefano Blanc Ecogarde at the PNR Verdon.

### Useful information

Practice : WALKING

Duration : 3 h

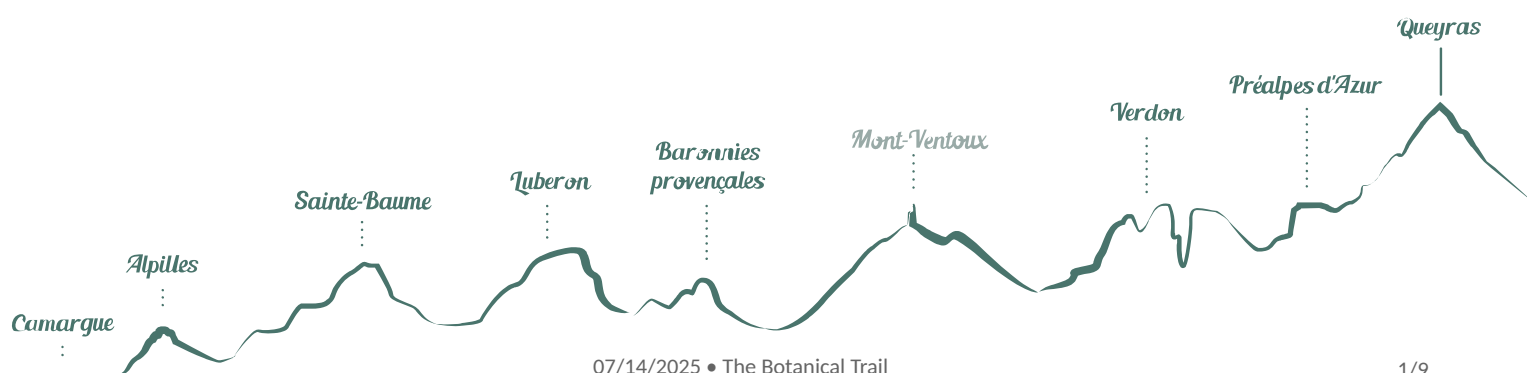
Length : 6.0 km

Trek ascent : 204 m

Difficulty : Easy

Type : Boucle

Themes : A lookout, a viewpoint, Flora, Heritage and history



# Trek

Departure : From the village center

Arrival : To the village center

Markings :  GR®  PR

From the car park of the tourist office, get on the D82 road and turn right towards the castle and its fountain. Turn right in 100m at the intersection between the roads of La Tuilière and Quinson.

**1-** Take the right route (Lake Road and Tuilière Road). After 50m on the Chemin de Tuilière, turn left onto the GR discovery trail (red and white markings). The entire climb, on a trail, is common with this special course. Pass in front of the viewpoint of the Tuilière. Cross a small valley and reach, to the top, a crossroads of tracks at a place known as Séouve.

**2-** At the crossroad turn right (yellow signs) and follow "pont coupé 1.5km"

**3-** Leave the trail that leads to the relay and take the path on the left, follow the trail. (Careful, the descent to the lake is a bit abrupt!)

**4-** At the bottom of the road turn right and join the paved road Chemin de Tuilière, follow it to point 1. Continue on the same route as before.



## On your path...



Once upon a time, Vière... (A)



Esparron, the small medieval lock (C)



The Phoenician Juniper or Mourven Provençal (E)



Lake of Esparron (G)



The Baron's dungeon (B)



The Viewpoint Indicator Map (D)



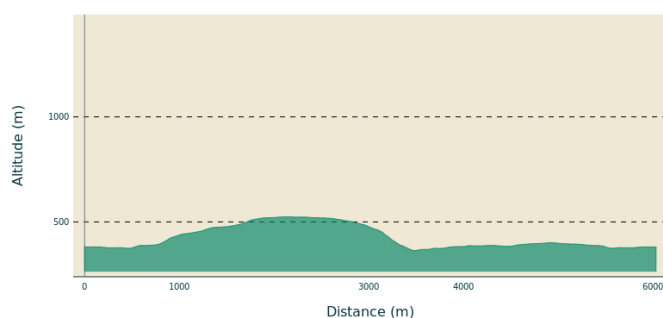
Le Pont Coupé (F)

# All useful information

## **Advices**

We recommend at least 2L / 34 OZ of water per person, a hat and proper walking shoes. Avoid trail during hot weather. Find out before, the forests are sometimes closed in the summer due to fire risk. The town of Esparron de Verdon had two major fires in 2003 and 2005, BE CAREFUL! FIRE CAN START VERY QUICKLY. (As a reminder, smoking in forests is prohibited).

## **Altimetric profile**



Min elevation 363 m

Max elevation 524 m

## **Transports**

Limitons les déplacements en voiture, pensons aux transports en commun et au covoiturage. Tous les transports en commun sur [www.pacamobilite.fr](http://www.pacamobilite.fr)

## **Access**

12km east of Greoux-les-Bains on the D952, D315, and D82

## **Advised parking**

Car park below the village

## Information desks

House of the Verdon Regional Nature Park



Domaine de Valx, 04360 Moustiers-Sainte-Marie

[info@parcduverdon.fr](mailto:info@parcduverdon.fr)

Tel : +33 (0)4 92 74 68 00

<http://www.parcduverdon.fr/>

OT Gréoux-les-Bains

7 place de l'hôtel de ville, 04800 Gréoux-les-Bains

[greouxlesbains@tourisme-dlva.fr](mailto:greouxlesbains@tourisme-dlva.fr)

Tel : +33 (0)4 92 78 01 08

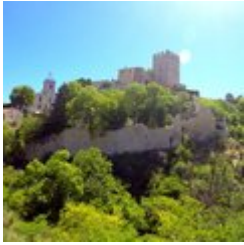
<http://www.greoux-les-bains.com/greoux-les-bains/fr/40/office-de-tourisme.html>

OTI Durance-Luberon-Verdon

<http://www.durance-luberon-verdon.com>

# On your path...

---



## Once upon a time, Vière... (A)

Located below the castle of Esparron-de-Verdon, the Vière area, historic heart of the village, did not resist the rural exodus and was abandoned by its inhabitants. It is now in ruins, nature has reasserted itself. After rehabilitation, the site is revived and is now accessible, secured and landscaped. This is an area for strolls, between vegetation and ruins, their stones being a remembrance, which offers magnificent views of the village and the lake.

Attribution : Stefano Blanc - PNR Verdon

---



## The Baron's dungeon (B)

The memory of Boniface VI of Castellane, a fierce baron and impetuous troubadour who lived in the 13th century, still hangs over Esparron-de-Verdon, and more particularly in the renowned dungeon of his castle. Because this mighty building with its massive battlements reflects the ardour of Boniface, who challenged the new Count of Provence, Charles of Anjou, whom he called scornfully "franciot" (little Frenchman).

Attribution : ©Stefano Blanc - PNR Verdon

---



## Esparron, the small medieval lock (C)

It was easy to cross Verdon to Esparron, the waters were calmer at the mouth of the lower gorges. A bridge, nowadays submerged by the waters of the lake, was built there in 1725. The village had therefore define an important route between Var and Haute-Provence. Its function itself is specified in its name. The medieval "Espar" is a lock. And what is this town locking? The great path, which of course, it is carefully monitoring at this period.

Attribution : DR

---



## The Viewpoint Indicator Map (D)

The viewpoint indicator map located 498m high provides views of the lake and the port of the town of Esparron du Verdon. In the distance, we can see the massif of Luberon and the Lure mountain

Attribution : ©Stefano Blanc - PNR Verdon





### The Phoenician Juniper or Mourven Provençal (E)

It is the second Mediterranean juniper that immediately differs from its cousin, the Cade, by its innumerable ramules covered with tiny tortoiseshell leaves. Its range is also less extensive. Very xerophile, he likes the poorest scrubland, cracks of rocks and even limestone cliffs where his red brick balls defy the most insane sunshine and aridity almost absolute.

Attribution : ©Stefano Blanc - PNR Verdon

---



### Le Pont Coupé (F)

Here the small road seems to flow into the lake. It has not always been the case. In 1967, the water filling of the lake submerged on 12m a stone bridge with three arches spanning the Verdon that connected "Le Quartier" to the rest of the town of Esparron. Passing between the Var and the Alpes de Haute Provence. The bridge built in 1725 by the town council of Arles was a passageway for sheep transhumance between La Crau and the Pre-Alps pastures thus avoiding the unpredictable Verdon.

Attribution : DR

---



### Lake of Esparron (G)

Lake of Esparron, with its 85,000,000m<sup>3</sup> has an area of 328ha for a maximum depth of 55m, is used to supply water to a hundred towns of the Var and Bouches du Rhone from Marseille to Toulon. The old canal of the Verdon is visible from the nature trail at the entrance of the gorges. It was built under Napoléon III and provided water supply from the Basse-Provence at that time. A lake in which it is pleasant to bathe in summer.

Attribution : Stefano Blanc - PNR Verdon

---



- En aucun cas les auteurs des contenus de ce site ne sauraient être tenus pour responsables de problèmes ou d'accidents sur les itinéraires cités.
- Cependant, nous comptons sur vous pour signaler toutes contradictions importantes entre cette fiche et le terrain.
- Pensez également à signaler les éventuels problèmes rencontrés pendant votre balade sur <http://sentinelles.sportsdenature.fr> (erreur de balisage, panneau défectueux, pollution, conflit d'usages...).
- La vente de cette fiche est autorisée au coût d'impression.
- Ne pas jeter dans la nature.

L'outil Geotrek a été financé par l'Union européenne, le Parc national des Ecrins et le Parc national du Mercantour.

Le projet Chemins des Parcs est financé par la Région Provence-Alpes-Côte-d'Azur et les Parcs naturels régionaux des Alpilles, de Camargue, du Luberon, du Queyras et du Verdon.

Ce projet partenarial rassemble également le Comité Régional du Tourisme, les agences départementales de développement touristique, les offices de tourisme et les syndicats d'initiative.

- The authors of this website will in no case be held responsible for problems or accidents on the routes mentioned.
- We count on you to point out any inconsistency between this content and the field itineraries
- Please report any problems encountered on the routes (route marking problems, defective panels, pollution, conflict of uses ...) on <http://sentinelles.sportsdenature.fr>
- The sale of this sheet is authorized at the cost of printing
- Please don't litter

The Geotrek tool was funded by the European Union, the Ecrins National Park and the Mercantour National Park.

The Chemins des Parcs project is funded by the Provence-Alpes-Côte-d'Azur Region and the regional nature parks of Alpilles, Camargue, Luberon, Queyras and the Verdon.

This project was developed in partnership with the Regional Tourism Committee, the departmental tourist development agencies, and tourist offices.



**www.cheminsdesparcs.fr**

*Tours et détours dans les Parcs naturels régionaux  
de Provence-Alpes-Côte d'Azur*

Avec le soutien de

