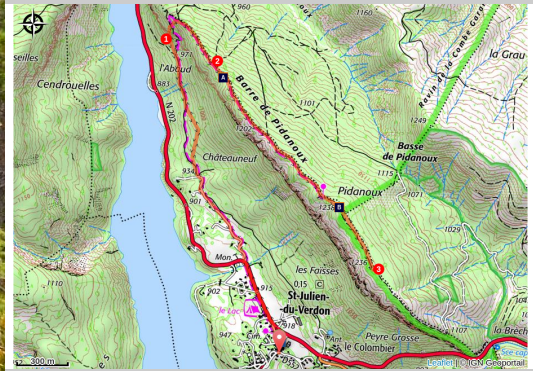


Barre du Pidanoux

Saint-Julien-du-Verdon



En traversant la forêt (©Stefano Blanc - PNR Verdon)

This hike, easy and very pleasant, is ideal during spring and offers multiple viewpoints on the Castillon lake.

This hike starts from the village of Saint-Julien-du-Verdon, located on the shores of the beautiful Castillon lake. The Barre de Pidanoux (small orogeny) overlooks the lake of 300m and offers exceptional views both to the North (Saint-André-les-Alpes) and to the South (Saint-Julien-du-Verdon). From the ridge, the view also covers the Basse d'Angles (mount) and the Pic de Chamatte recognizable by its unusual outline.

Useful information

Practice : WALKING

Duration : 4 h

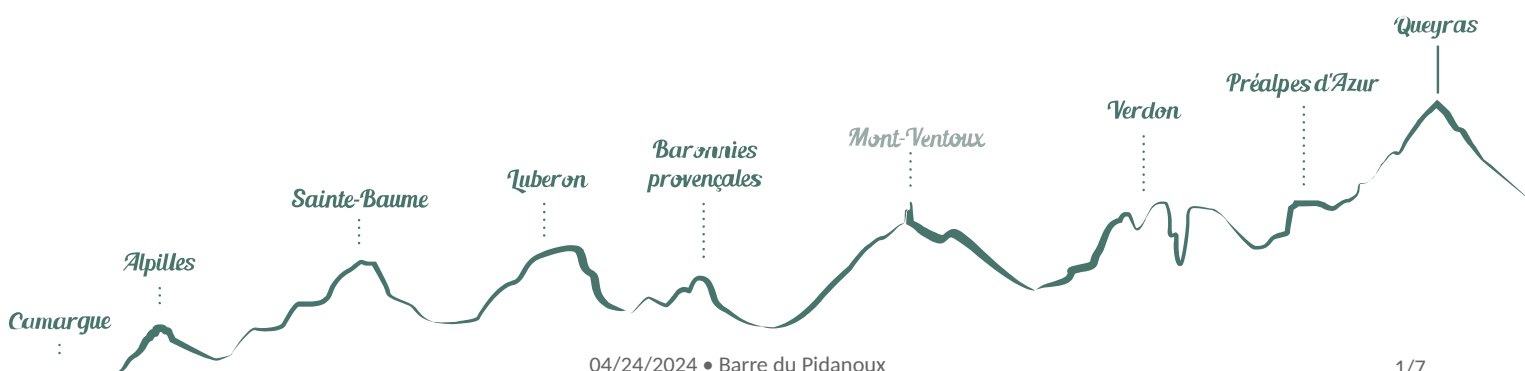
Length : 8.5 km

Trek ascent : 395 m

Difficulty : Medium

Type : Aller-retour

Themes : A lookout, a viewpoint,
Heritage and history



Trek

Departure : From the village center

Arrival : Village center

Markings :  PR

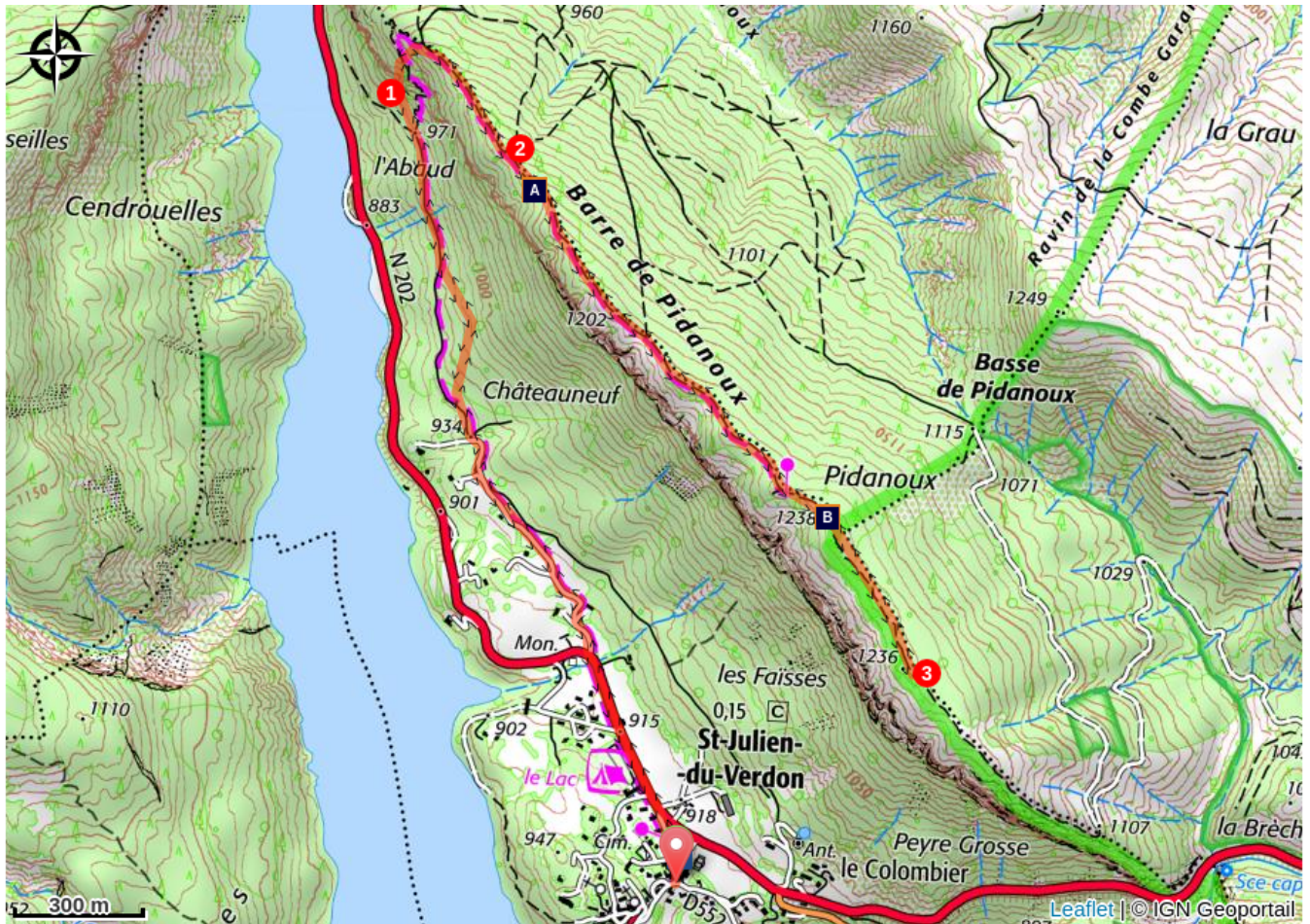
From the village, reach the big curve of the Route de St André-les-Alpes at 500m, just before the Memorial of the Resistance. Exit the N202 and follow the small road on the right. Continue on 700m after the last house until a dirt road. Take the flat road for another 800m.


1- At the end of the road (turning area), take the small path on the right (some steep sections!). At the end of the rise, climb to the ridge of the Barre de Pidanoux.

2- Continue on the ridge trail for 1km. Pass the peak (1,237m) and continue for another 500m. Complete the path where the trail descends steeply.

3- Head back by the same route to the village.

On your path...



 Bar of Pidanoux (A)

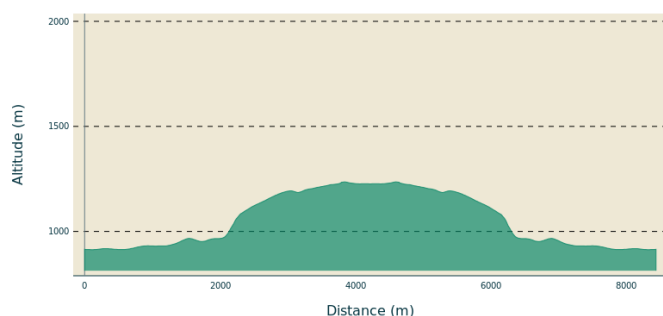
 Belvedere of Pidanoux (B)

All useful information

Advices

Avoid high summer temperatures, leave early. We recommend: 2L of water per person, a hat and proper hiking shoes. Preferred seasons: spring, autumn (fall).

Altimetric profile



Min elevation 913 m
Max elevation 1236 m

Transports

Limitons les déplacements en voiture, pensons aux transports en commun et au covoiturage. Tous les transports en commun sur www.pacamobilite.fr

Access

At 8km South of Saint-André-les-Alpes through the N202.

Advised parking

In the village

Information desks

House of the Verdon Regional Nature Park



Domaine de Valx, 04360 Moustiers-Sainte-Marie
info@parcduverdon.fr
Tel : +33 (0)4 92 74 68 00
<http://www.parcduverdon.fr/>

OT Saint André les Alpes - Barrême
Place Marcel Pastorelli, 04170 Saint-André-les-Alpes
info@ot-st-andre-les-alpes.fr
Tel : +33 (0)4 92 89 02 39
<http://www.ot-st-andre-les-alpes.fr/>

On your path...



Bar of Pidanoux (A)

Plunging view on the Lake of Castillon and bar of Pidanoux to the left.

Attribution : DR



Belvedere of Pidanoux (B)

Once reached the highest point (1,237m), you can enjoy the panorama at 360°. Numerous views over the village, the lake of Castillon, the summit of Crémon (facing you) and the summit of Chamatte (east).

Attribution : DR



- En aucun cas les auteurs des contenus de ce site ne sauraient être tenus pour responsables de problèmes ou d'accidents sur les itinéraires cités.
- Cependant, nous comptons sur vous pour signaler toutes contradictions importantes entre cette fiche et le terrain.
- Pensez également à signaler les éventuels problèmes rencontrés pendant votre balade sur <http://sentinelles.sportsdenature.fr> (erreur de balisage, panneau défectueux, pollution, conflit d'usages...).
- La vente de cette fiche est autorisée au coût d'impression.
- Ne pas jeter dans la nature.

L'outil Geotrek a été financé par l'Union européenne, le Parc national des Ecrins et le Parc national du Mercantour.

Le projet Chemins des Parcs est financé par la Région Provence-Alpes-Côte-d'Azur et les Parcs naturels régionaux des Alpilles, de Camargue, du Luberon, du Queyras et du Verdon.

Ce projet partenarial rassemble également le Comité Régional du Tourisme, les agences départementales de développement touristique, les offices de tourisme et les syndicats d'initiative.

- The authors of this website will in no case be held responsible for problems or accidents on the routes mentioned.
- We count on you to point out any inconsistency between this content and the field itineraries
- Please report any problems encountered on the routes (route marking problems, defective panels, pollution, conflict of uses ...) on <http://sentinelles.sportsdenature.fr>
- The sale of this sheet is authorized at the cost of printing
- Please don't litter

The Geotrek tool was funded by the European Union, the Ecrins National Park and the Mercantour National Park.

The Chemins des Parcs project is funded by the Provence-Alpes-Côte-d'Azur Region and the regional nature parks of Alpilles, Camargue, Luberon, Queyras and the Verdon.

This project was developed in partnership with the Regional Tourism Committee, the departmental tourist development agencies, and tourist offices.

www.cheminsdesparcs.fr

*Tours et détours dans les Parcs naturels régionaux
de Provence-Alpes-Côte d'Azur*

Avec le soutien de

