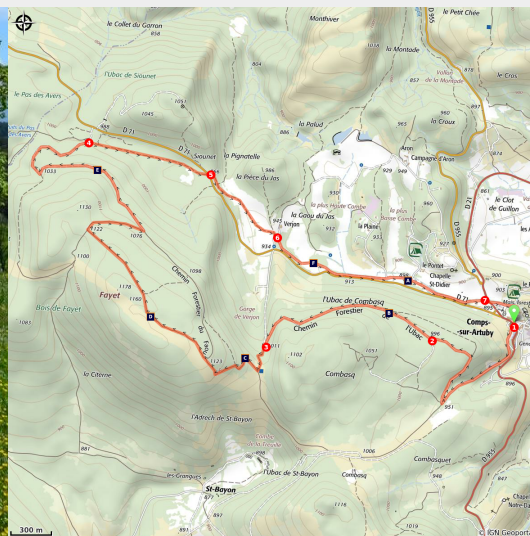


## Le Fayet

Comps-sur-Artuby



Le Jas Verjon (Stefano Blanc - PNR Verdon)

*Discovering a varied natural heritage ranging from white oak forests with beautiful beech forests that host a remarkable biodiversity.*

Roaming this scrubland is seeing typical Provençal birds such as the Eurasian Blackcap and Western Bonelli's Warbler. Then the scrubland gives way to a beautiful beech forest called Faou in Provence, reminding us that we are already in the Alps. The Short-toed treecreeper and the Eurasian nuthatch may also come out. These birds are associated with old woodlands where they feed on insects mainly by prospecting trunks and barks.

### Useful information

Practice : WALKING

Duration : 4 h

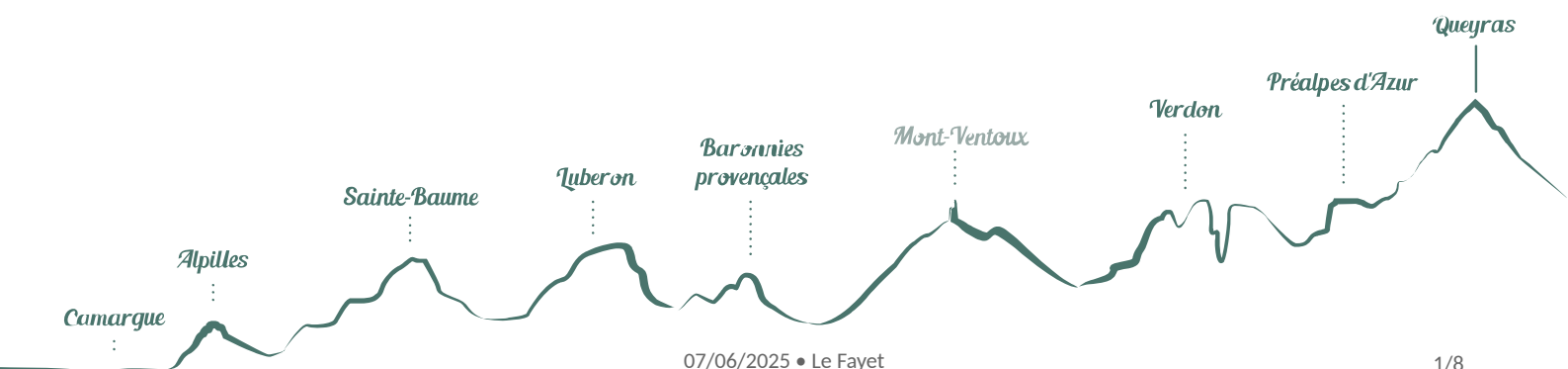
Length : 11.5 km

Trek ascent : 314 m

Difficulty : Medium

Type : Boucle

Themes : Fauna, Flora



# Trek

Departure : Place de la République across from the Town Hall

Arrival : Place de la République across from the Town Hall

Markings :  PR local

**1** - From the car park located off of Comps-sur-Artuby, take the alley of St. Bayon that rises in front of the town hall. This street, paved at first, gives way to a forest road that goes into the woods of Combasq. Follow the light green markings.

**2** - Leave the Combasq track to take the path that goes straight to the Gorges of Verjon.

**3** - At the "Gorges de Verjon" sign-post, take direction of "fayet 1".

**4** - At the "Chemin de Fayet" sign-post, take the path on the right towards Comps-sur-Artuby through Verjon.

**5** - After crossing the road, follow the direction of Comps-sur-Artuby by the descending trail.

**6** - At the "Verjon" sign-post, continue towards Comps-sur-Artuby by the trail and then by road.

**7** - At the crossing ("Chapelle Saint-Didier" sign-post), regain your parking location by taking the direction of Bargème.



# On your path...



For lazybones... (A)



The Bonelli's Warbler (C)



The snake Aesculapian (E)



View of the Chapel of Saint-André (B)



Forbidden zone (D)



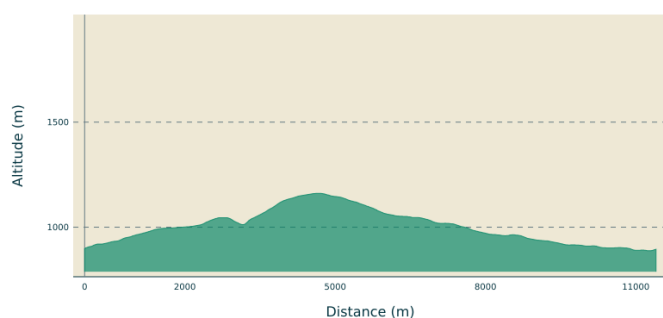
The Pyramidal Orchid (F)

# All useful information

## **AdVICES**

Always enquire about the weather. During hunting season, do not leave the marked trails. Take the trail only during authorized periods! Ask about the opening of forests, especially in the summer. (See "for more information" tab on the website of the Var prefecture). Provide 2L of water per person at least et proper shoes.

## **Altimetric profile**



Min elevation 888 m  
Max elevation 1161 m

## **Information desks**

House of the Verdon Regional Nature Park



Domaine de Valx, 04360 Moustiers-Sainte-Marie

[info@parcduverdon.fr](mailto:info@parcduverdon.fr)

Tel : +33 (0)4 92 74 68 00

<http://www.parcduverdon.fr/>

# On your path...

---



## For lazybones... (A)

White oak that gradually penetrates the beech forest here (perhaps a consequence of global warming) is one of the two most common natural essences of Haute-Provence. Not so famous as lumber because it is difficult to work in carpentry, it however makes a good firewood. It has long been used to make an excellent charcoal. Traces of charcoal kilns are pervasive, still visible such as circular areas on black floors.

Attribution : Guillaume Pluchon - PNR Verdon

---



## View of the Chapel of Saint-André (B)

Perspective on the plain and the chapel of Saint-André at the top of the hill.

Attribution : Guillaume Pluchon - PNR Verdon

---



## The Bonelli's Warbler (C)

It is a ubiquitous bird in the spring for those who know recognize his characteristic vocals. This is a migratory present from April to September. He spends the winter south of the Sahara. Time travel and migration management are innate to him. The white warbler lives in coniferous mouths of coppice and mixed trees in mountainous areas up to 2000 m altitude.

Attribution : DR

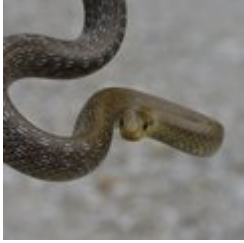
---



## Forbidden zone (D)

Created in 1970, the site of Canjuers covering a surface area of 35,000ha is the largest military training camp in Western Europe. You can not come out of Comps-sur-Artuby when you want. Great part of the territory of the town (almost two thirds) is situated in a "forbidden zone". Access to the public is forbidden, with some exceptions: logging, sheep transhumance, etc. A rural activity that left the site almost uninhabited and where nature predominates.

Attribution : Guillaume Pluchon - PNR Verdon



### The snake Aesculapian (E)

The Aesculapian snake frequents clear and sunny environments but fled extreme heat. It is found in forests and sunny dry places, brush the edges of the fields and the old walls. She lives on the ground but it is an excellent climber, this snake is the only tree snake that can meet posted in trees and shrubs from 15 to 30 m. Safe and protected like all reptiles.

Attribution : Stefano Blanc - PNR Verdon

---



### The Pyramidal Orchid (F)

The pyramidal orchid is not part of orchids that produce nectar. It is particularly appreciated by the butterflies that ensure fertilization, the morphology of the flowers being well adapted to the tubes of the Lepidoptera.

Attribution : Guillaume Pluchon - PNR Verdon



- En aucun cas les auteurs des contenus de ce site ne sauraient être tenus pour responsables de problèmes ou d'accidents sur les itinéraires cités.
- Cependant, nous comptons sur vous pour signaler toutes contradictions importantes entre cette fiche et le terrain.
- Pensez également à signaler les éventuels problèmes rencontrés pendant votre balade sur <http://sentinelles.sportsdenature.fr> (erreur de balisage, panneau défectueux, pollution, conflit d'usages...).
- La vente de cette fiche est autorisée au coût d'impression.
- Ne pas jeter dans la nature.

L'outil Geotrek a été financé par l'Union européenne, le Parc national des Ecrins et le Parc national du Mercantour.

Le projet Chemins des Parcs est financé par la Région Provence-Alpes-Côte-d'Azur et les Parcs naturels régionaux des Alpilles, de Camargue, du Luberon, du Queyras et du Verdon.

Ce projet partenarial rassemble également le Comité Régional du Tourisme, les agences départementales de développement touristique, les offices de tourisme et les syndicats d'initiative.

- The authors of this website will in no case be held responsible for problems or accidents on the routes mentioned.
- We count on you to point out any inconsistency between this content and the field itineraries
- Please report any problems encountered on the routes (route marking problems, defective panels, pollution, conflict of uses ...) on <http://sentinelles.sportsdenature.fr>
- The sale of this sheet is authorized at the cost of printing
- Please don't litter

The Geotrek tool was funded by the European Union, the Ecrins National Park and the Mercantour National Park.

The Chemins des Parcs project is funded by the Provence-Alpes-Côte-d'Azur Region and the regional nature parks of Alpilles, Camargue, Luberon, Queyras and the Verdon.

This project was developed in partnership with the Regional Tourism Committee, the departmental tourist development agencies, and tourist offices.



**www.cheminsdesparcs.fr**

*Tours et détours dans les Parcs naturels régionaux  
de Provence-Alpes-Côte d'Azur*

Avec le soutien de

