

The Sirenians Trail

Castellane



Le mur des Siréniens (Christian Peugot)



And strange marine mammals called the sirenians inhabited our lands...

40million years ago, the col des Lèques was under the sea. In this warm sea lived peaceful marine mammals: sirenians (ancestors of the current dugongs and manatees). In a unique place in the world, set up by the Haute Provence geological reserve, you will discover remains from 35million years ago.

Useful information

Practice : WALKING

Duration : 1 h 30

Length : 3.7 km

Trek ascent : 112 m

Difficulty : Very easy

Type : Aller-retour

Themes : A lookout, a viewpoint, Geology



Trek

Departure : Col des Lèques, Castellane

Arrival : Col des Lèques, Castellane

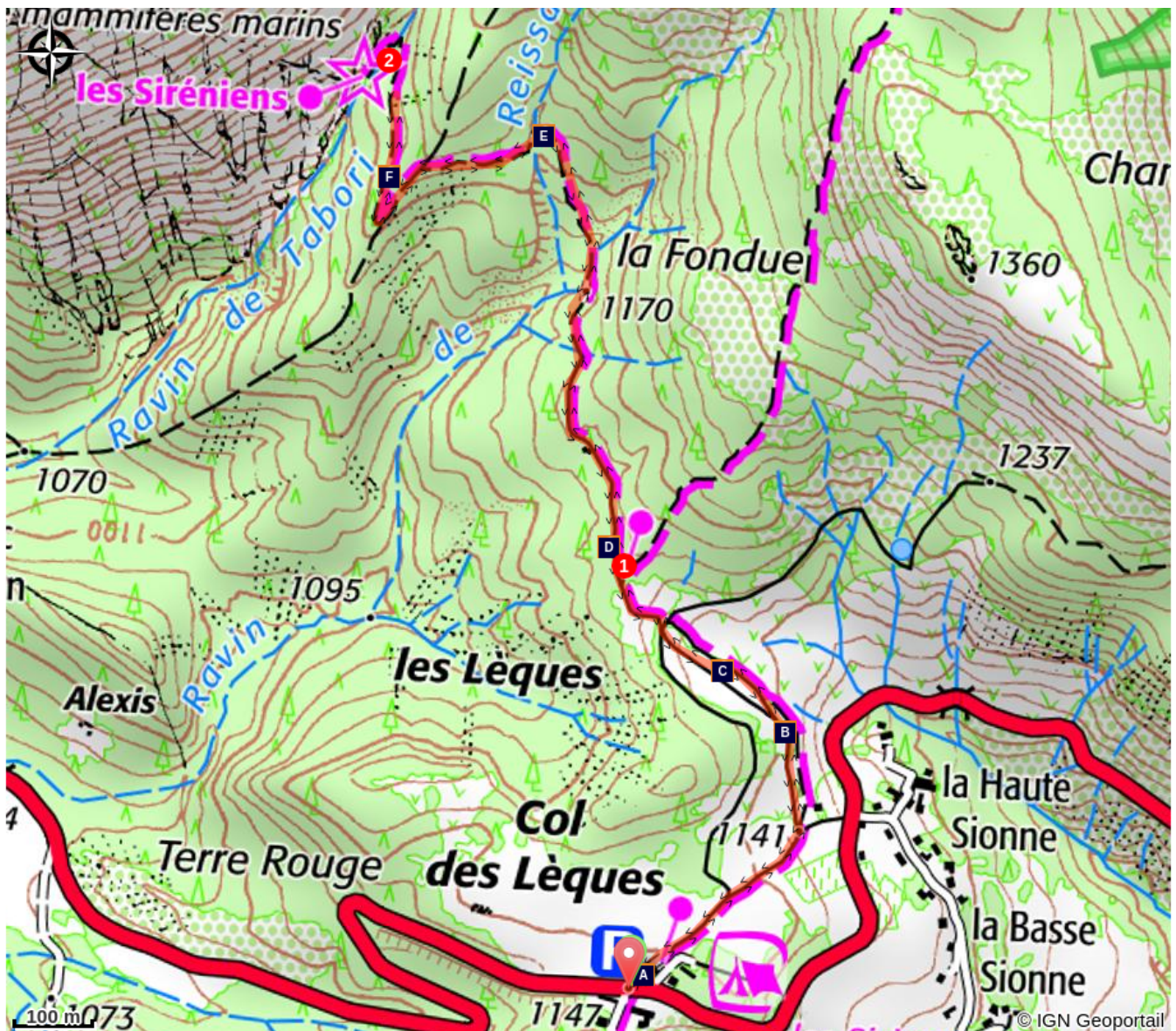
Markings :  PR







From the car park at the Col des Lèques, take the path along the campsite. In 500m, follow the path and find a small pass and an intersection of marked trails.

1 - Go left and leave on the right the trail going up towards La Baume. Find a ruin by the relatively flat and shaded path. Pass by and then find a small footbridge. After crossing it, climb the trail with a few wooden steps under the pines. Cross the next valley and find a view of the Col des Lèques, the north face of Cadières de Brandis and the summits of Robion and Destourbes, dominating Castellane. Go down the path and go to the right in the direction of the valley where the sirenian fossil site is located.

2 - The same route is used for the return.

On your path...



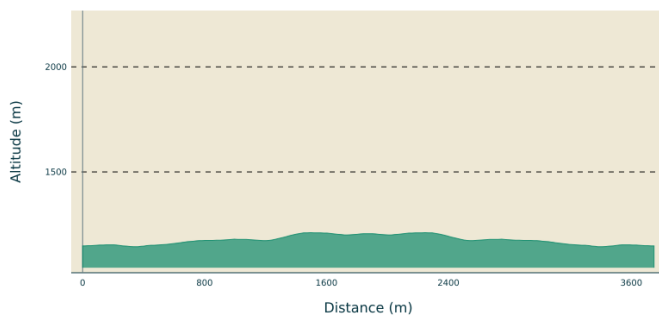
-  The pass of Lèques (A)
-  The valley of fossil mermaids (C)
-  The fossil valley (E)
-  Roc de Castellane (B)
-  Ammonites (D)
-  the Sirenia (F)

All useful information

AdVICES

avoid the heat of summer, bring a hat, water, and walking shoes. The first part of the route passes close to the pastures of the sheep in spring and autumn. The course may be slightly deviated in this area to avoid crossing the herd. Follow the markup. Keep dogs on a leash.

Altimetric profile



Min elevation 1144 m
Max elevation 1211 m

Transports

« Limitons les déplacements en voiture, pensons aux transports en commun ! Prenez la ligne régionale BV1bis entre Riez et Castellane du 1er Juillet au 11 octobre. Depuis Riez, départ 8h35, retour 16h00. Depuis Castellane, départ à 7h30, retour 16h20 et 19h30. Retrouvez tous les horaires sur <https://zou.maregionsud.fr/> ».

Access

8km from Castellane, take the RN85 towards Digne-les-Bains until Col des Lques.

i Information desks

House of the Verdon Regional Nature Park



Domaine de Valx, 04360 Moustiers-Sainte-Marie

info@parcduverdon.fr

Tel : +33 (0)4 92 74 68 00

<http://www.parcduverdon.fr/>

OTI Verdon Tourisme

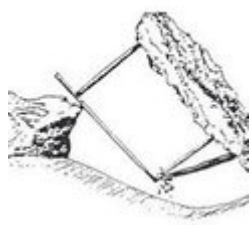
Rue nationale, 04120 Castellane

castellane@verdontourisme.com

Tel : +33 (0)4 92 83 61 14

<http://www.verdontourisme.com>

On your path...



The pass of Lèques (A)

The "neighborhood" called Lèques situated to the north of pass of Lèques evokes the name of these thrush traps, consisting of two flat stones, that allowed to trap the birds at that time (a completely prohibited practice today). A few juniper berries, thrushes' favorite candy in winter, were placed between the sticks. The bird had to move the sticks to peck at grains, and the vertical stone fell and knocked it.

Attribution : DR



Roc de Castellane (B)

Overlooking the town from its 184m straight and steep cliffs, the top of the Roc is decorated with a chapel topped by a statue of the Virgin and Child. Majestic, strong and anchored since the dawn of time, it looks like the relic of a surrealist dungeon, left there by improbable and fantastic creatures.

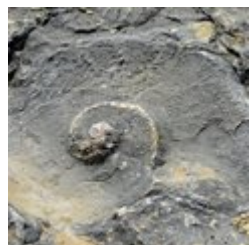
Attribution : DR



The valley of fossil mermaids (C)

Fossils less than 1% of living things are found fossilized, which goes to show that fossilization is somewhat "miraculous". It is the transformation of the remains of an organism and its conservation in rocks. Obviously, the mineralized portions (skeletons, shells, etc.) are best preserved. But wood and fingerprints, traces of activities, could also be preserved, thus providing valuable information.

Attribution : DR



Ammonites (D)

Fossils relate us about the history of life. They have allowed the birth of the theory of evolution by showing us the existence of now extinct animals. In our region, ammonites are a good example. They disappeared 65 million years ago after having populated all the seas of the globe during the Mesozoic era.

Attribution : Stefano Blanc - PNR Verdon



The fossil valley (E)

Water sometimes flows into the ravine. In its work of erosion, it gradually reveals the relief shaped for the first time more than forty million years ago. On the right bank, you can see a gray limestone massif dated back to 140 million years (Jurassic). On the left bank of the marls and yellowish sandstone limestone, dating back to 40 million years.

Attribution : Stefano Blanc - PNR Verdon



the Sirenia (F)

If sirenians the ravine of Tabori, who lived in the sea, are now at nearly 1,000 meters above sea level, it is not because of a sudden drop in the water level. The sediment accumulated at the bottom of the sea for millions of years are found upright and altitude when the Alps were raised.

Attribution : Guillaume Pluchon - PNR Verdon



- En aucun cas les auteurs des contenus de ce site ne sauraient être tenus pour responsables de problèmes ou d'accidents sur les itinéraires cités.
- Cependant, nous comptons sur vous pour signaler toutes contradictions importantes entre cette fiche et le terrain.
- Pensez également à signaler les éventuels problèmes rencontrés pendant votre balade sur <http://sentinelles.sportsdenature.fr> (erreur de balisage, panneau défectueux, pollution, conflit d'usages...).
- La vente de cette fiche est autorisée au coût d'impression.
- Ne pas jeter dans la nature.

L'outil Geotrek a été financé par l'Union européenne, le Parc national des Ecrins et le Parc national du Mercantour.

Le projet Chemins des Parcs est financé par la Région Provence-Alpes-Côte-d'Azur et les Parcs naturels régionaux des Alpilles, de Camargue, du Luberon, du Queyras et du Verdon.

Ce projet partenarial rassemble également le Comité Régional du Tourisme, les agences départementales de développement touristique, les offices de tourisme et les syndicats d'initiative.

- The authors of this website will in no case be held responsible for problems or accidents on the routes mentioned.
- We count on you to point out any inconsistency between this content and the field itineraries
- Please report any problems encountered on the routes (route marking problems, defective panels, pollution, conflict of uses ...) on <http://sentinelles.sportsdenature.fr>
- The sale of this sheet is authorized at the cost of printing
- Please don't litter

The Geotrek tool was funded by the European Union, the Ecrins National Park and the Mercantour National Park.

The Chemins des Parcs project is funded by the Provence-Alpes-Côte-d'Azur Region and the regional nature parks of Alpilles, Camargue, Luberon, Queyras and the Verdon.

This project was developed in partnership with the Regional Tourism Committee, the departmental tourist development agencies, and tourist offices.

www.cheminsdesparcs.fr

*Tours et détours dans les Parcs naturels régionaux
de Provence-Alpes-Côte d'Azur*

Avec le soutien de

