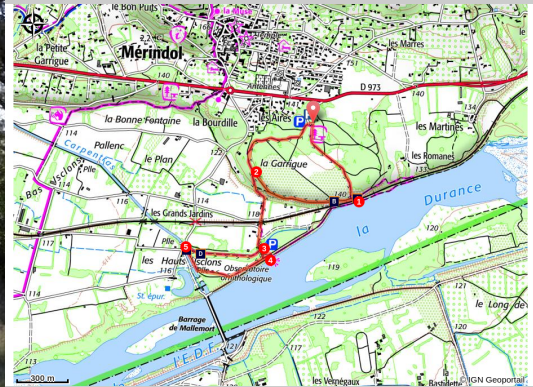


## Between the scrubland and the Durance river

Mérindol



Au coeur de La Garrigue (©Marie Grenouilleau - PNR Luberon)

*Aromas from pines and scrub, mix of meanders and the tranquillity of the birds. A triumphant Durance cocktail!*

« This body of water, upstream of the dam of Mallemort on the Durance, is of prime importance for birds. For example, it is the largest winter dormitory of the region for cormorants.! With its wealthy wildlife and therefore in preys, the Durance offers a prime hunting ground for raptors such as the Grand Duke or the Bonneli Eagle, nesting in the cliffs of the Petit Luberon nearby». Aline Salvadon project manager of the natural areas at the RNP of Luberon.

### Useful information

Practice : WALKING

Duration : 1 h 30

Length : 4.2 km

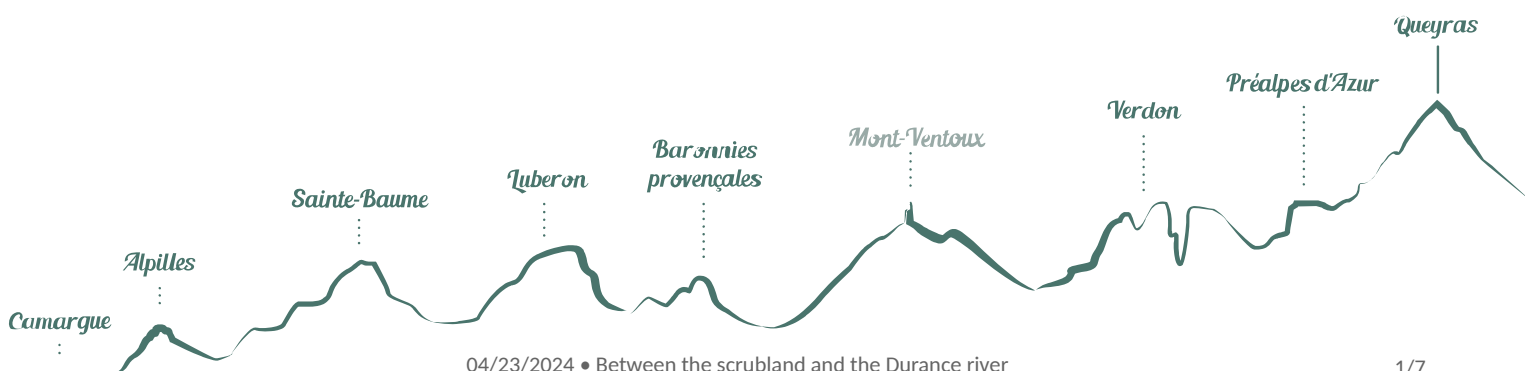
Trek ascent : 44 m

Difficulty : Easy

Type : Boucle

Themes : A lookout, a viewpoint, Flora, Waters and rivers

Accessibility : Disabled person, Stroller



# Trek

Departure : Car park of the Garrigue, Mérindol

Arrival : Car park of the Garrigue, Mérindol

Markings :  PR

Cross the second barrier and go straight into the woods. Continue straight at the first intersection and then at the intersection shaped in a Y, take a right. Reach the point of view of the Durance (do not go beyond reason to the cliff edge).!)

**1** - Take a right. Continue straight to the next crossing.

**2** - Do not miss on the left the path going down to the valley of the Grand Jardin. Go past a house and crops and upon arriving on a small road, go across under the railway track. Take the second road ahead and then the dirt road across (old car park). Cross the little bridge over the old canal of Carpentras.

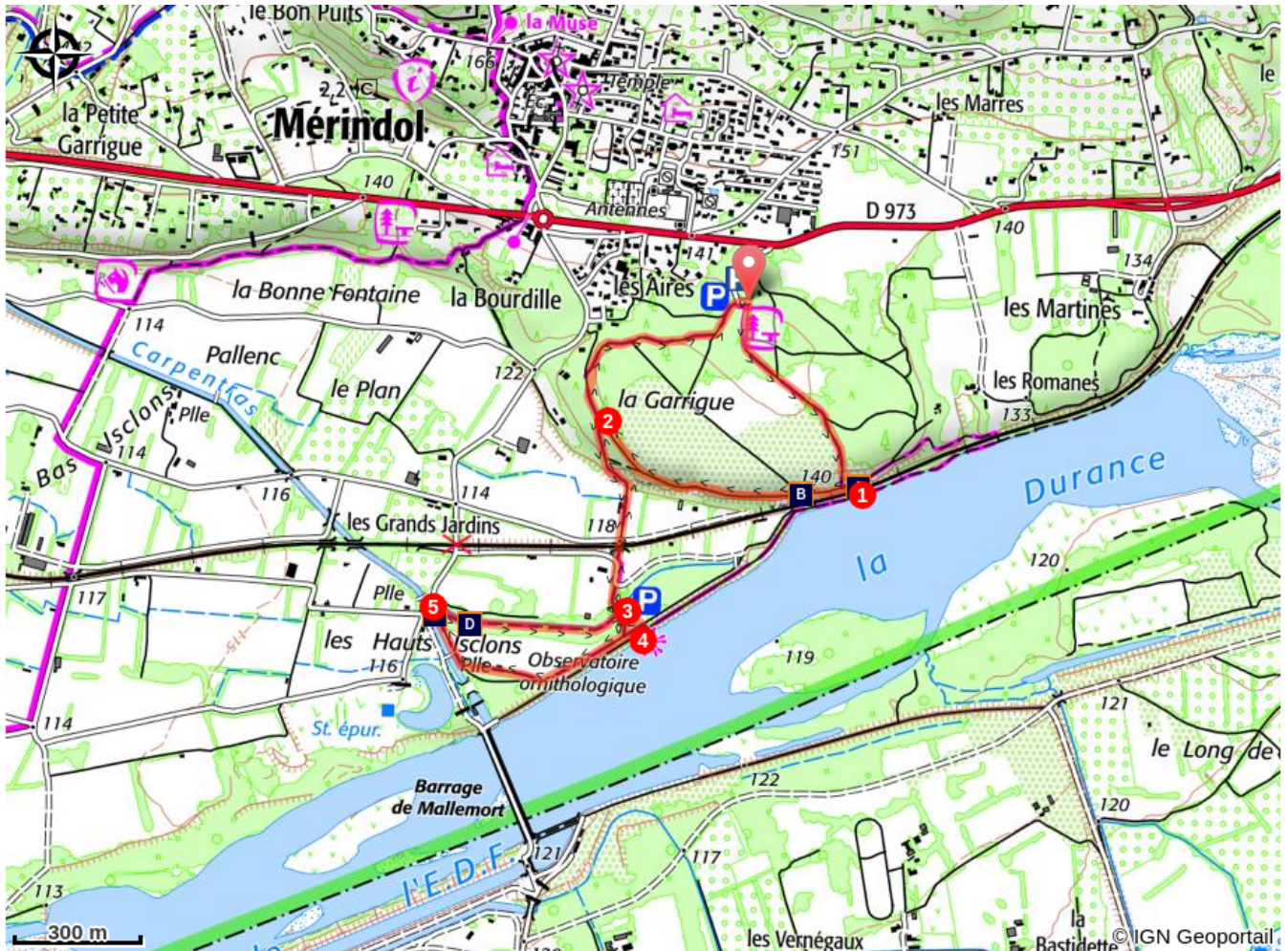
**3** - .Continue straight Reach to another path. Turn left, climb the dam by the stairs and reach the bird observatory. Retrace your steps and turn left at the foot of the staircase. Leave behind the track taken at the beginning and continue straight the path at the foot of the dam. On the bridle path, continue on the right along a large field and reach the Carpentras canal. Continue to the right until the end of the dirt road.



**4** - Just before the road, turn right, go through the woods and follow the path along the old canal. Come back to the small bridge (point 3).



**3** - Take a sharp left and go back to the forest of La Garrigue (point 2) by the route taken at the beginning.

**2** - At the top of the steep hill, continue straight. Then take a right to return to the starting point calmly.

# On your path...



-  The Durance, a Provençal queen (A)
-  Watering from the Durance (C)

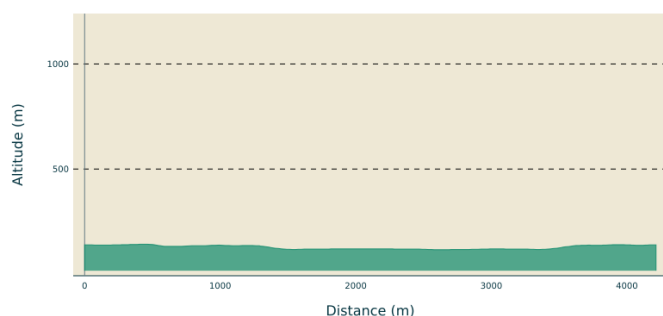
-  Coloured pebbles (B)
-  The southern frog (D)

# All useful information

## **Advices**

Do not go too close to the cliff edges (point 1) and irrigation canals (before and after point 4). Be discreet if you want to watch birds from the observatory (after point 3).

## **Altimetric profile**



Min elevation 116 m  
Max elevation 142 m

## **Access**

At 18km east of Cavaillon, through the D973. The parking entrance of La Garrigue is on the right, 500m after the big roundabout at the foot of the village (towards Lauris).

## **Advised parking**

Shaded parking area in the communal forest of La Garrigue.

## **Information desks**

House of the Luberon Regional Nature Park

60, place Jean Jaurès, 84400 Apt  
accueil@parcduluberon.fr  
Tel : +33 (0)4 90 04 42 00  
<https://www.parcduluberon.fr/>

OTI Luberon Coeur de Provence  
Place François Tourel, 84300 Cavaillon  
contact@destinationluberon.com  
Tel : +33 (0)4 90 71 32 01  
<https://www.destinationluberon.com/>



# On your path...

---



## The Durance, a Provençal queen (A)

Taking its source at Mount Genève in the Hautes-Alpes, the Durance continues its course in the Alpes-de-Haute-Provence to then establish the border between Bouches-du-Rhône and Vaucluse. The various hydroelectric constructions (like the huge dam of Serre-Ponçon) have significantly reduced its flow and its natural environment. The challenge today is to reconcile the production of electricity from renewable energy and the protection of the ecosystems of the stream.

Attribution : ©Stéphane Legal - PNR Luberon

---

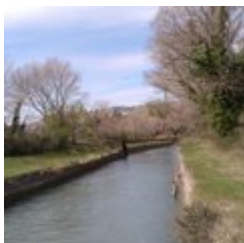


## Coloured pebbles (B)

During the tour, you will often find pebbles under your feet. A pebble is a piece of rock torn from erosion and rounded from travelling rivers. There are of all colours and some come from far away, the Alps. We are 20 to 25m above the Durance and yet it has left these pebbles during the last ice age between 60 000 and 15 000 years ago.

Attribution : ©DR-nicoulina

---



## Watering from the Durance (C)

The Union Canal (or mixed channel) draws its water from the Durance EDF (French energy company) channel at the Mallemort dam. This canal supplies the Cabedan-neuf Canal, the Saint-Julien Canal, the Canal de l'Isle and the Carpentras Canal. It is therefore almost 20 000ha which are irrigated from the Union Canal, spread over 56 communes of the Vaucluse.

Attribution : ©Emilie Auray - PNR Luberon

---



## The southern frog (D)

This little bright green frog is very discreet in the daytime when it clings to branches or reed leaves. It lives near bodies of water. When the rainy season approaches or during the chanting of the males from May to July, you can hear it chant from almost a kilometre away.!

Attribution : ©David Tatin



- En aucun cas les auteurs des contenus de ce site ne sauraient être tenus pour responsables de problèmes ou d'accidents sur les itinéraires cités.
- Cependant, nous comptons sur vous pour signaler toutes contradictions importantes entre cette fiche et le terrain.
- Pensez également à signaler les éventuels problèmes rencontrés pendant votre balade sur <http://sentinelles.sportsdenature.fr> (erreur de balisage, panneau défectueux, pollution, conflit d'usages...).
- La vente de cette fiche est autorisée au coût d'impression.
- Ne pas jeter dans la nature.

L'outil Geotrek a été financé par l'Union européenne, le Parc national des Ecrins et le Parc national du Mercantour.

Le projet Chemins des Parcs est financé par la Région Provence-Alpes-Côte-d'Azur et les Parcs naturels régionaux des Alpilles, de Camargue, du Luberon, du Queyras et du Verdon.

Ce projet partenarial rassemble également le Comité Régional du Tourisme, les agences départementales de développement touristique, les offices de tourisme et les syndicats d'initiative.

- The authors of this website will in no case be held responsible for problems or accidents on the routes mentioned.
- We count on you to point out any inconsistency between this content and the field itineraries
- Please report any problems encountered on the routes (route marking problems, defective panels, pollution, conflict of uses ...) on <http://sentinelles.sportsdenature.fr>
- The sale of this sheet is authorized at the cost of printing
- Please don't litter

The Geotrek tool was funded by the European Union, the Ecrins National Park and the Mercantour National Park.

The Chemins des Parcs project is funded by the Provence-Alpes-Côte-d'Azur Region and the regional nature parks of Alpilles, Camargue, Luberon, Queyras and the Verdon.

This project was developed in partnership with the Regional Tourism Committee, the departmental tourist development agencies, and tourist offices.

[www.cheminsdesparcs.fr](http://www.cheminsdesparcs.fr)

*Tours et détours dans les Parcs naturels régionaux  
de Provence-Alpes-Côte d'Azur*

Avec le soutien de

