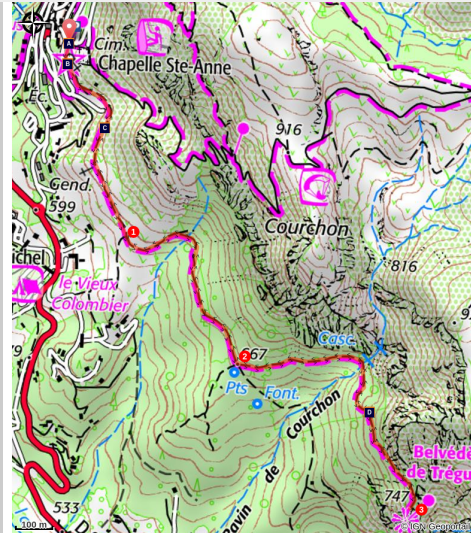


The botanical trail of Tréguier

Moustiers-Sainte-Marie



En route pour le Tréguier (Stefano Blanc - PNR Verdon)

This walk will enable you to discover the village of Moustiers with its terrace crops sustained by dry-stone walls called "restanques" and olive plantations.

Roaming the botanical trail of Tréguier is to discover twenty information boards on different plant species of the area. It is walking up to a promontory overlooking the valley of Angouire with a remarkable view of lake Sainte-Croix.

Useful information

Practice : WALKING

Duration : 2 h

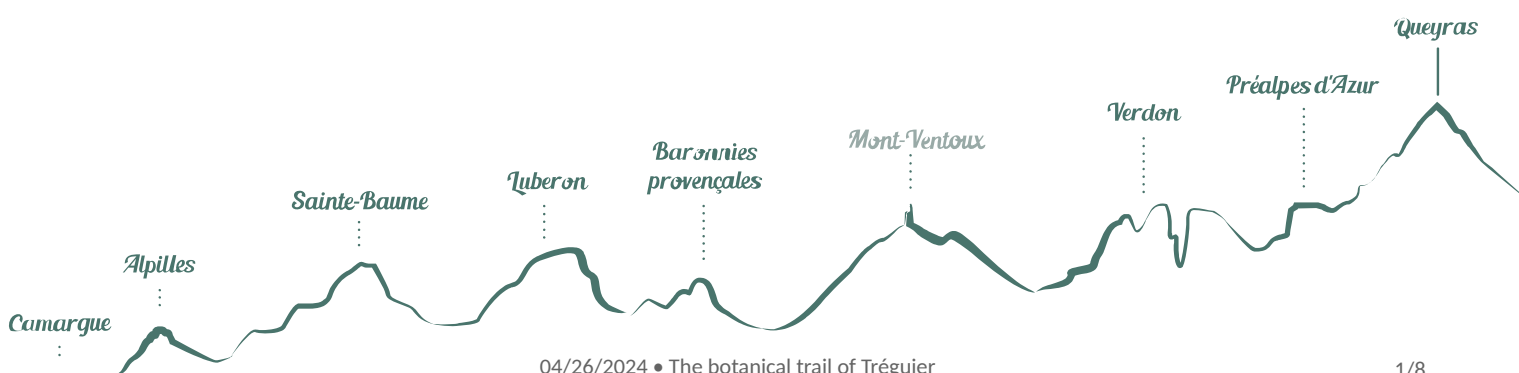
Length : 4.3 km

Trek ascent : 127 m

Difficulty : Easy

Type : Aller-retour

Themes : A lookout, a viewpoint, Flora, Heritage and history



Trek

Departure : In front of the Chapel of St. Anne, Moustiers Sainte Marie

Arrival : In front of the Chapel of St. Anne, Moustiers Sainte Marie

Markings :  PR

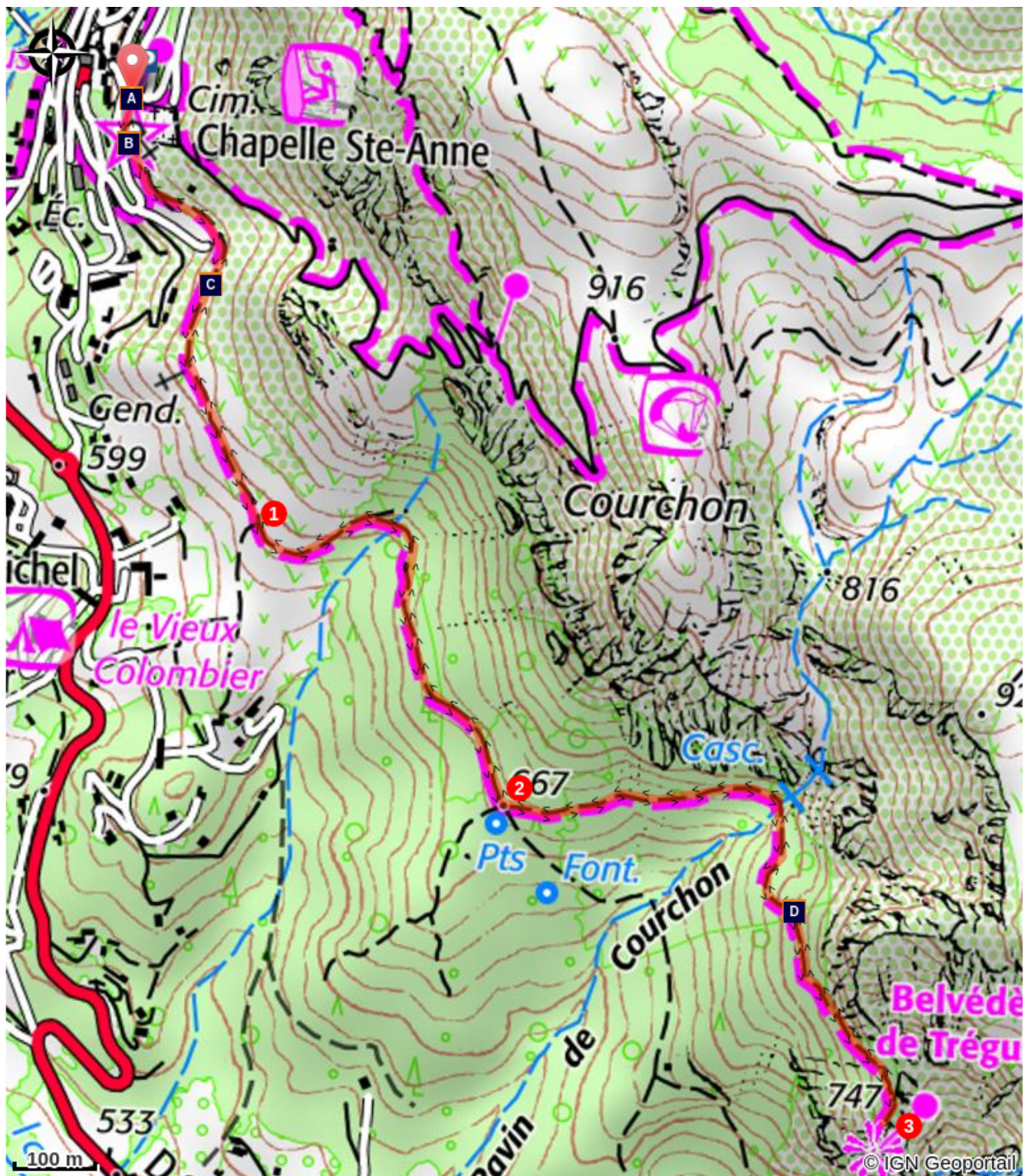
Coming out the car park of the heights of Moustiers, go straight to the cemetery. Pass it and go towards the Chapel of St. Anne. Now head to the terrace crop area. After the olive groves, continue under the oaks in the middle of the restanques. Walk on flat ground for 1km.



1 - Then gradually go up on the left.



2 - At the crossroads, climb the path on the left and roam through a new decking area. Cross the ravine of Courchon and join after a slight rise in the woods, the rocky outcrop overlooking the valley of Angouire. Follow the signs and stay on the ledge to watch the valley of Angouire below (vertiginous path!).

3 - The same route is used for the return.

On your path...



-  The earthenware from Moustiers (A)
-  The stone benches of Moustiers (C)

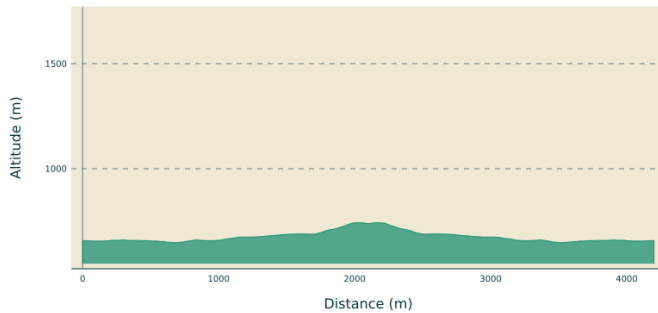
-  Sainte-Anne Chapel (B)
-  View from the viewpoint (D)

All useful information

AdVICES

300 last metres to go, a difficult path among slippery blocks in wet weather. Vertiginous rocky peak (747m).

Altimetric profile



Min elevation 648 m
Max elevation 743 m

Transports

Limitons les déplacements en voiture, pensons aux transports en commun ! - **Prenez la ligne régionale BV1bis entre Riez et Castellane** du 1 mai au 30 septembre Depuis Riez, départ 9h05, 10h35 retour 13h50, et 17h15, 19h40 (E1) du 1/07/22 au 31/08/22 Depuis Castellane, départ à 7h15, retour 16h35 et 19h30 (E1) du 1/07/22 au 31/08/22

Access

From the village of Moustiers Sainte Marie.

Advised parking

Car park at the heights of Moustiers (paid parking)

i Information desks

House of the Verdon Regional Nature Park



Domaine de Valx, 04360 Moustiers-Sainte-Marie

info@parcduverdon.fr

Tel : +33 (0)4 92 74 68 00

<http://www.parcduverdon.fr/>

OT Moustiers Sainte-Marie

Maison de Lucie - Place de l'Eglise, 04360 Moustiers Sainte-Marie

info@moustiers.fr

Tel : +33 (0)4 92 74 67 84

<http://www.moustiers.eu/>

On your path...



The earthenware from Moustiers (A)

The fame of Moustiers is not only due to its site, as unique as it is. For many connoisseurs, Moustiers is synonymous of pottery and ancient coins made from "Moustiers", which are among the finest earthenware pieces in France and are highly sought after by connoisseurs. Many museums, many castles or aristocratic houses have one or more older pieces from Moustiers. One can admire them at the Sèvres Museum, the Museum of Lyon and the Louvre.

Attribution : ©Stefano Blanc - PNR Verdon



Sainte-Anne Chapel (B)

The chapel was built in the 16th century, in the place of a chapel of the 12th century, with recovered materials from the towers and ramparts which were useless.

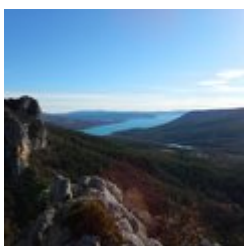
Attribution : Stefano Blanc - PNR Verdon



The stone benches of Moustiers (C)

The Provençal term "bancau" (pronounced bancaou) means literally "flower bed", "cultivated bed" and in a broader sense "crop-growing terrace" and here in Moustiers, a beautiful olive grove is cultivated. An olive grove is an orchard of olive trees, mainly for olive cultivation and production of olive oil. The olive groves are mainly located in the Mediterranean countries and in the Middle East. There are olive groves in Provence, in southern France

Attribution : Stefano Blanc - PNR Verdon



View from the viewpoint (D)

A plunging view of Lake Sainte-Croix.

Attribution : Stefano Blanc - PNR Verdon



- En aucun cas les auteurs des contenus de ce site ne sauraient être tenus pour responsables de problèmes ou d'accidents sur les itinéraires cités.
- Cependant, nous comptons sur vous pour signaler toutes contradictions importantes entre cette fiche et le terrain.
- Pensez également à signaler les éventuels problèmes rencontrés pendant votre balade sur <http://sentinelles.sportsdenature.fr> (erreur de balisage, panneau défectueux, pollution, conflit d'usages...).
- La vente de cette fiche est autorisée au coût d'impression.
- Ne pas jeter dans la nature.

L'outil Geotrek a été financé par l'Union européenne, le Parc national des Ecrins et le Parc national du Mercantour.

Le projet Chemins des Parcs est financé par la Région Provence-Alpes-Côte-d'Azur et les Parcs naturels régionaux des Alpilles, de Camargue, du Luberon, du Queyras et du Verdon.

Ce projet partenarial rassemble également le Comité Régional du Tourisme, les agences départementales de développement touristique, les offices de tourisme et les syndicats d'initiative.

- The authors of this website will in no case be held responsible for problems or accidents on the routes mentioned.
- We count on you to point out any inconsistency between this content and the field itineraries
- Please report any problems encountered on the routes (route marking problems, defective panels, pollution, conflict of uses ...) on <http://sentinelles.sportsdenature.fr>
- The sale of this sheet is authorized at the cost of printing
- Please don't litter

The Geotrek tool was funded by the European Union, the Ecrins National Park and the Mercantour National Park.

The Chemins des Parcs project is funded by the Provence-Alpes-Côte-d'Azur Region and the regional nature parks of Alpilles, Camargue, Luberon, Queyras and the Verdon.

This project was developed in partnership with the Regional Tourism Committee, the departmental tourist development agencies, and tourist offices.

www.cheminsdesparcs.fr

*Tours et détours dans les Parcs naturels régionaux
de Provence-Alpes-Côte d'Azur*

Avec le soutien de

