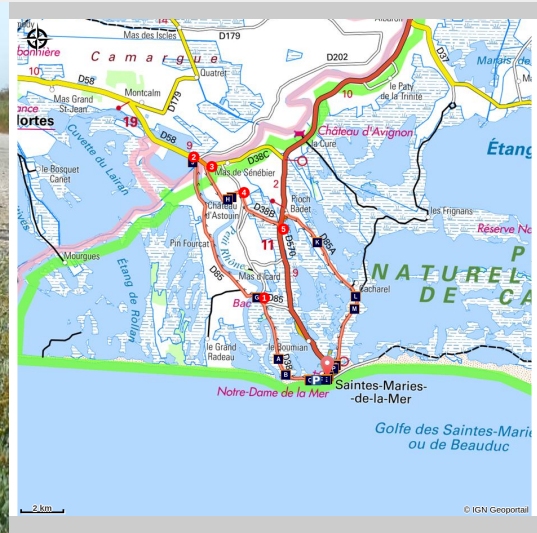


## From Sauvage ferry to Cacharel by bike

Saintes-Maries-de-la-Mer



A vélo sur la route de Cacharel (Juliette Primpier - PNR Camargue)

*Admire the singular landscapes of the Camargue, born from the marriage of land and water.*

From Saintes-Maries-de-la-Mer, this loop offers a parade of typical Camargue landscapes between land and water. You will appreciate along the Petit-Rhône, but also stepping over it with the Sauvage ferry. The Consécanière and the Empérial ponds will reveal you the richness of the natural inheritance of the Camargue. Traditional huts of guardian will complete the landscape. A hike that holds all its promises to contemplate nature Camargue!

### Useful information

Practice : BIKE

Duration : 4 h

Length : 32.0 km

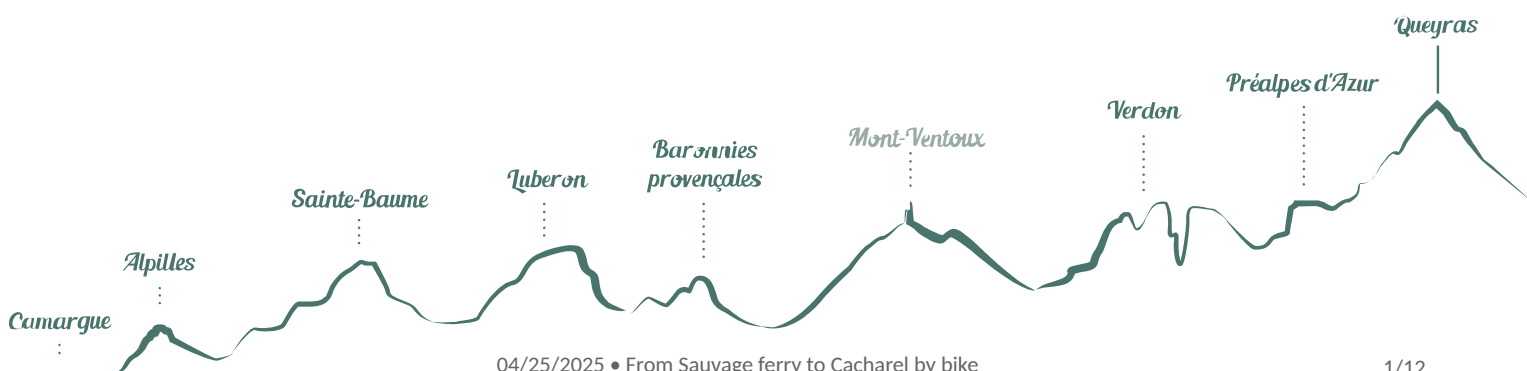
Trek ascent : 52 m

Difficulty : Easy

Type : Boucle

Themes : Fauna, Flora, Waters and rivers

Accessibility : Hybrid bike



# Trek

Departure : Tourist Office, les Saintes-Maries-de-la-Mer

Arrival : Les Saintes-Maries-de-la-Mer

Back to the Tourist Office, head left on Van Gogh Avenue, towards Aigues-Mortes. Continue straight for 6 km and follow the Grau d'Orgon and the Petit-Rhône, on the D38.

**1** - Turn left on the D85 and take the Sauvage ferry (information about ferry times at the Tourist Office). Continue on the D85 towards Aigues-Mortes and cross the small bridge that spans the Peccais Canal at Sylvéréal.

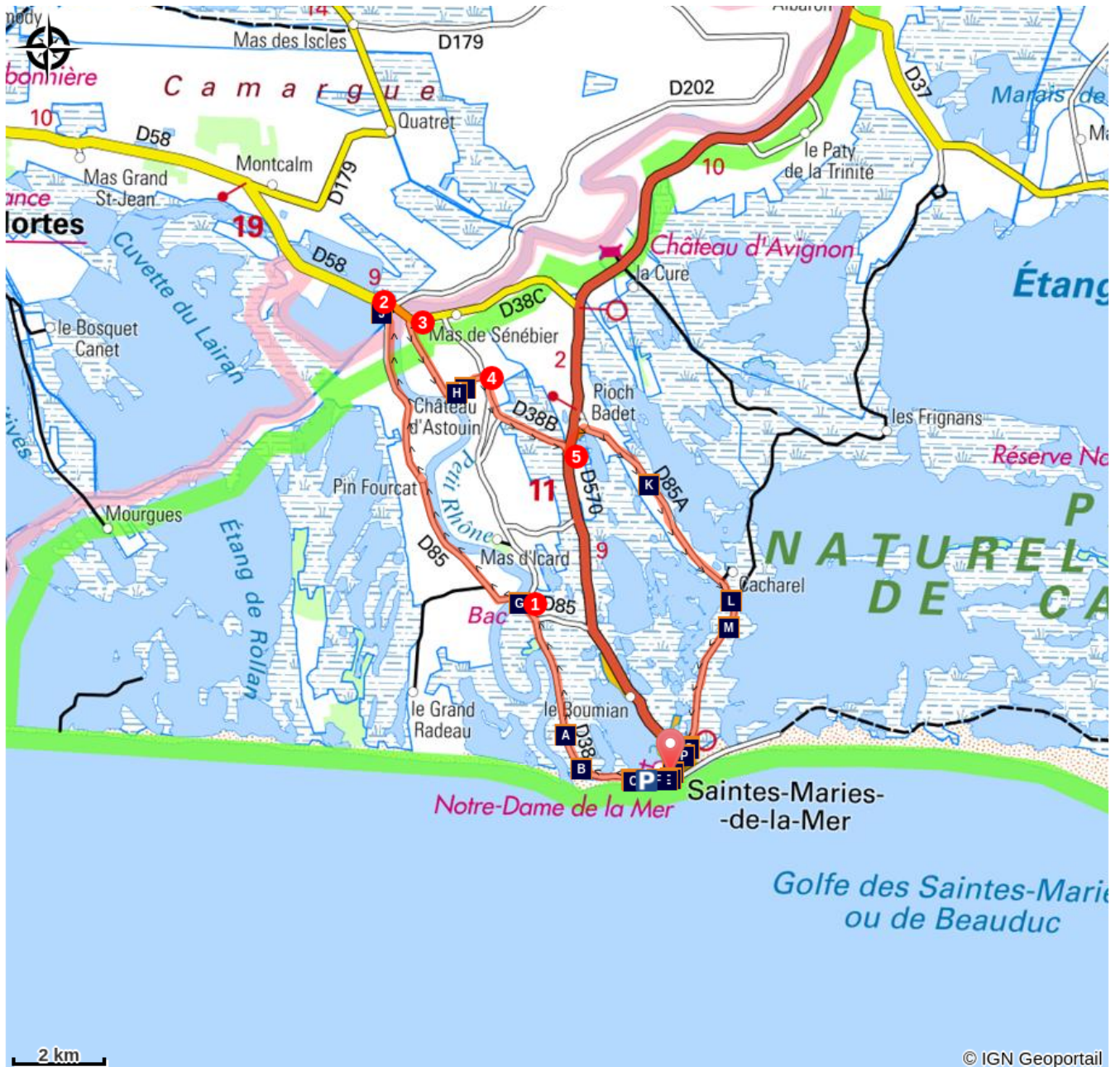
**2** - At the intersection of the D58, turn right and continue for 350 m towards Arles. Take the bridge over the Petit-Rhône.

**3** - Do not miss turning right towards S33. Walk 2 km and reach the Astouin hamlet. Leave on the left the Astouin Castle estate.

**4** - Take a right on the intersection with the D38. Go forward for 500 m. Turn left and continue on the D38b towards Pioch-Badet. **VARIANT:** a shorter variant is possible by going straight on towards the Cabanes de Cambon to join the Saintes-Maries-de-la-Mer.

**5** - Turn left, on the D570, towards Pioch-Badet and the Cacharel road. Follow Pioch-Badet, cross the village and take the road to Cacharel Saintes-Maries-de-la-Mer and return to the starting point by the D85A, along the several ponds that you will see on your left for 10 km.

# On your path...



- |  |  |
|--|--|
|  The Amarée Mas (A)                                   |  The Petit-Rhône estuary (B)                |
|  The Gardian Hut (C)                                  |  The Camargue Cross (D)                     |
|  The Camarguaise Race (E)                             |  The Port Gardian (F)                       |
|  Sauvage's ferry (G)                                  |  Rice fields (H)                            |
|  The Astouin castle estate (I)                        |  The Camargue Biosphere Reserve (J)         |
|  The Consécanière pond (K)                            |  Crin-Blanc, the movie made in Cacharel (L) |
|  The Mosquito (M)                                     |  Le Bouvau d'Aubanel (N)                    |
|  The Departmental Reserve of Imperialists (O)         |  The eel (P)                                |
|  The fortified church of Saintes-Maries-de-la-Mer (Q) |  The arenas of Saintes-Maries-de-la-Mer (R) |

# All useful information

## **Advices**

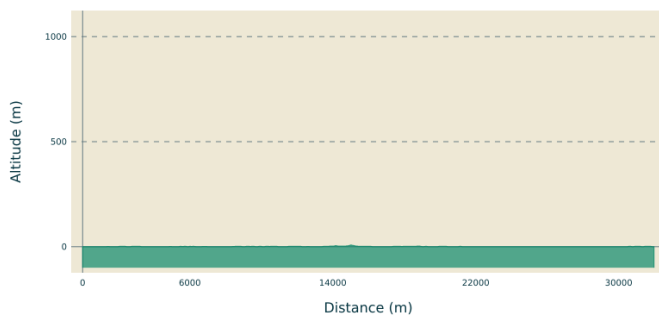
D58 up to Sylvéréal, dangerous road!

Stay alert on the D570, busy road.

At the crossroads of Pioch-Badet hamlet, caution, dangerous intersection.

Respect the rules of the road on roads open to public traffic.

## **Altimetric profile**



Min elevation 0 m  
Max elevation 8 m

## **Transports**

Envia transport network : Line 20 > Arles/Les Saintes-Maries-de-la-Mer by Albaron (free bikes racks) >> [www.tout-envia.com](http://www.tout-envia.com);

## **Access**

37 km south-west of Arles, by the D570.

## **Advised parking**

Parking Avenue Théodore Aubanel, Les Saintes-Maries-de-la-Mer

## Information desks

OT Saintes-Maries-de-la-Mer - Tourisme en  
Camargue



5 Avenue Van Gogh, 13460 Saintes Maries de la Mer

[info@saintesmaries.com](mailto:info@saintesmaries.com)

Tel : 04 90 97 82 55

<http://www.saintesmaries.com/>

the Camargue museum

Mas du pont de rousty, 13200 Arles

[info@parc-camargue.fr](mailto:info@parc-camargue.fr)

Tel : +33 (0)4 90 97 10 40

<http://www.parc-camargue.fr/>

# On your path...

---



## The Amarée Mas (A)

The Amarée Mas was rented in 1899 by the Baroncelli marquis, writer and manadier who developed the Camargue, he exploited the traditions of the territory such as the Camargue race and the Gypsy pilgrimage. The Amarée mas which extends over 200 ha, the main house adjoins a stable Due to financial problems, Baroncelli is forced to leave the Amarée, the Saintois contribute to offer him the land of Simbèu mas where he builds a farmhouse similar to the one of Amarée.

Attribution : Juliette Primpier - PNR Camargue

---



## The Petit-Rhône estuary (B)

The Petit-Rhône is one of the two arms of the Rhone Delta that leaves the main riverbed north of Arles to jump into the Mediterranean Sea. The Petit-Rhône estuary is located 2 km west of Saintes-Maries-de-la-Mer and is called Grau d'Orgon. The Clos du Rhône beach, located at the Petit Rhône estuary, is the last beach of Saintes-Maries-de-la-Mer. On the other side of the Petit-Rhône, there is the Espiguette Port Camargue beach.

Attribution : Juliette Primpier - PNR Camargue

---



## The Gardian Hut (C)

Traditional home of guardians of Camargue, the hut has whitewashed walls and a roof of sagne (reeds marshes). The architecture of these cabins is original : straight walls on all sides except the one exposed to the mistral (north-west) which is in apse (of rounded form) to offer less catch in the wind. At the top of this apse, there is usually a form of cross or horn that used to stow the cabin on the ground during windy days.

Attribution : Juliette Primpier - PNR Camargue

---



## The Camargue Cross (D)

The painter and sculptor Hermann Paul conceives the Camargue Cross in 1926 following the request of Marquis Baroncelli, « inventor » of the Camargue. It associates the guardians and the fishermen and symbolizes three virtues: the Cross for Faith, the Anchor for Hope and the Heart for Charity. The guardians and the Camargue soul are represented by the tridents. The original cross was made in wrought iron by Joseph Barbanson and inaugurated on July 7, 1926.

Attribution : Juliette Primpier - PNR Camargue



## The Camarguaise Race (E)

Originally, the race is a taurine game where animals and farmhands fight and play with the bull. Towards the end of the 19th century, this bullfighting game becomes less violent and only the man plays with the bull. We fix the attributes on the horns of the Camargue bull intended to be removed by the raseteurs dressed in white, now only protagonists of the race. A cockade is fixed on the horns of the bull and bonuses are awarded to the one who will pick up the attribute.

Attribution : Marjorie Mercier - PNR Camargue

---



## The Port Gardian (F)

The creation of the marina, Port Gardian, dates back to the development of tourism in the Camargue in the mid-twentieth century. Built in June 1984, it has managed to keep its family atmosphere and its human dimension. This harbour has 380 rings. The village church, located not far from the port, 200 m from the wharves, is used as bitter, a landmark fixed and unambiguously identifiable. It guides boaters and fishermen sailing on the Mediterranean Sea.

Attribution : Juliette Pimpier - PNR Camargue

---



## Sauvage's ferry (G)

Put in circulation in 1972, Sauvage's ferry was completely renovated in 2004. It allows to connect the two banks of the Petit-Rhône for free. It is powered by two side impellers with no possibility of steering and its circulation is facilitated by a cable. The ferry can carry 8 cars, 30 passengers and the crew for a crossing of a duration of 2 min. The nearby equestrian centres offer ballads for which you have to take the ferry, so it is common to see horses on board.

Attribution : DR

---



## Rice fields (H)

Rice farming has been present in the Camargue since the post-war period. Complex, this culture follows several stages: lifting, tillering, bolting, return and flowering. The land is flooded to promote the germination of rice grains and prevent the proliferation of fungi. Rice farming therefore requires freshwater irrigation and extensive drainage to develop the saltiest land. Huge amounts of water between the two arms of the Rhône (400 million m<sup>3</sup> per year) are needed.

Attribution : Laurie Vannel - PNR Camargue

---



### The Astouin castle estate (I)

The Astouin castle estate was able to develop itself thanks to the containment of the Rhone, close to agricultural activities, between Petit-Rhône and the Vaccarès pond. The Astouin castle estate consists of a farmhouse dating from the eighteenth century, an old chapel and a large park and is surrounded by rice paddies. It is at the foot of the cross located in the Astouin castle estate that the Crusaders in the 11th century would have gathered before embarking for the Holy Land.

Attribution : Opus Species - PNR Camargue

---



### The Camargue Biosphere Reserve (J)

The Camargue was classified as a Biosphere Reserve in 1977. Between these folds still partly wooded, you will find low lands occupied by lagoons lined with salt steppes, reed marshes and ponds. The agricultural lands are composed of wet meadows and grazers dedicated to the grazing of bulls and horses, old marshes converted into rice paddies of lagoons designed for the exploitation of salt and vegetable crops and viticulture on the dunes.

Attribution : Opus Species - PNR Camargue

---



### The Consécanière pond (K)

It is a place of passage and rest for many migratory birds. In winter, ducks and coots find a relative tranquillity. This natural abundance motivated the need for protection by the Department of Bouches-du-Rhône as well as the Malagroy and Imperial ponds. The water level of the Consécanière pond is maintained artificially low by pumping, the pump rejecting the waters of the pond towards the Malagroy pond. The pond is surrounded by a wooded border of tamarisk.

Attribution : Opus Species - PNR Camargue

---



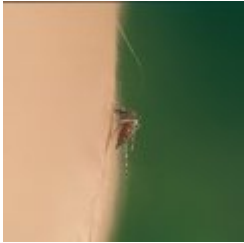
### Crin-Blanc, the movie made in Cacharel (L)

Crin-Blanc is a French movie shot by Ambert Lamorisse in 1952 and released in 1953. Crin-Blanc, leader of a herd of Camargue horses in freedom, is captured by men. He manages to escape and Folco, a little boy, is the only one able to tame this wild horse, a friendship is born. A movie that was written and directed in Cacharel and helped to reinforce the image of the Camargue: windswept sand landscapes where white horses, black bulls and pink flamingos coexist.

Attribution : Juliette Primpier - PNR Camargue

---





## The Mosquito (M)

There are 40 species of mosquitoes but only ten are biting. Females recover protein from the human blood that are necessary for the maturation of their eggs. They lay thousands of eggs on the soil dried up that are waiting, sometimes years, the rise of the waters to hatch. The mosquito is inconvenient for the man but it is useful to many species: dragonflies, fish, bats ... that feed on them. It is therefore an indispensable link in the Camargue biodiversity.

Attribution : Emmanuel Vialet - PNR Camargue



## Le Bouvau d'Aubanel (N)

The Baroncelli marquis, famous character of Camargue life, gave to his manade the name of Manade Santenco which means, in Provençal, manade of Saintes-Maries. At the death of the marquis, his son-in-law Henri Aubanel then manages the Santenco manade.. On June 15, 1996, the Saintes-Maries-de-la-Mer inaugurate the Henri Aubanel bouvau, a circular enclosure where bulls are grouped after selection. At the death of Henri Aubanel, his son Pierre manages the manade that he renames Aubanel Baroncelli Santenco manade.

Attribution : Juliette Pimpier - PNR Camargue



## The Departmental Reserve of Imperialists (O)

Classified Departmental Reserve, Imperial and Malagroy Ponds were acquired by the Departmental Council of Bouches-du-Rhone in 1964 to protect these fragile natural environments (2,770 ha) which are home to many species of birds. The fishing, a traditional activity in Camargue, is practiced in the Imperial reserve in a boat without motor which imposes the use, as formerly, of the "partygue" (pole). Fishermen are looking for shrimps, eels.

Attribution : Chloé Scannapiéco - PNR Camargue



## The eel (P)

At the graus level (or passages), communication canals between the sea and the littoral ponds, you will find fish, towards the flooded sansouïre and the ponds or towards the sea. Migrating species include mullet, sea bass, but also sea bream, sole and especially eel. Born in the Sargasso Sea, she joined the Atlantic and Mediterranean coasts after a long journey. She comes to grow in the coastal ponds or rivers where she spends several years of her life.

Attribution : Julien Faure - PNR Camargue



## The fortified church of Saintes-Maries-de-la-Mer (Q)

True highlight of the Camargue (15 m), the church offers a breathtaking view of the village and all the Camargue. The 53 steps of a spiral staircase lead to the roof of the church where the panorama unfolds in all its splendour : up there, you can take advantage of a wide angle vision on the city, the sea and the ponds. Intense and sparkling blue of the Mediterranean Sea, purple hue of the Imperial pond The wind, the sun, the view of the calm expanse of the sea invite you to discover this landscape.

Attribution : Chloé Scannapiéco - PNR Camargue

---



## The arenas of Saintes-Maries-de-la-Mer (R)

The arenas of Saintes-Maries-de-la-Mer were inaugurated in 1931 and can accommodate 4,500 people. They are built in hard material and have a circular shape.. Part of the arena collapsed in 1931, and was rebuilt in 1932. In 1985, they were redesigned by the architect André Marchetti. They offer three forms of bull races: the Camargue race, the Spanish race, and the rejón bullfight where the bull is fought by a rider, the rejoneador.

Attribution : Juliette Primpier - PNR Camargue



- En aucun cas les auteurs des contenus de ce site ne sauraient être tenus pour responsables de problèmes ou d'accidents sur les itinéraires cités.
- Cependant, nous comptons sur vous pour signaler toutes contradictions importantes entre cette fiche et le terrain.
- Pensez également à signaler les éventuels problèmes rencontrés pendant votre balade sur <http://sentinelles.sportsdenature.fr> (erreur de balisage, panneau défectueux, pollution, conflit d'usages...).
- La vente de cette fiche est autorisée au coût d'impression.
- Ne pas jeter dans la nature.

L'outil Geotrek a été financé par l'Union européenne, le Parc national des Ecrins et le Parc national du Mercantour.

Le projet Chemins des Parcs est financé par la Région Provence-Alpes-Côte-d'Azur et les Parcs naturels régionaux des Alpilles, de Camargue, du Luberon, du Queyras et du Verdon.

Ce projet partenarial rassemble également le Comité Régional du Tourisme, les agences départementales de développement touristique, les offices de tourisme et les syndicats d'initiative.

- The authors of this website will in no case be held responsible for problems or accidents on the routes mentioned.
- We count on you to point out any inconsistency between this content and the field itineraries
- Please report any problems encountered on the routes (route marking problems, defective panels, pollution, conflict of uses ...) on <http://sentinelles.sportsdenature.fr>
- The sale of this sheet is authorized at the cost of printing
- Please don't litter

The Geotrek tool was funded by the European Union, the Ecrins National Park and the Mercantour National Park.

The Chemins des Parcs project is funded by the Provence-Alpes-Côte-d'Azur Region and the regional nature parks of Alpilles, Camargue, Luberon, Queyras and the Verdon.

This project was developed in partnership with the Regional Tourism Committee, the departmental tourist development agencies, and tourist offices.

[www.cheminsdesparcs.fr](http://www.cheminsdesparcs.fr)

*Tours et détours dans les Parcs naturels régionaux  
de Provence-Alpes-Côte d'Azur*

Avec le soutien de

