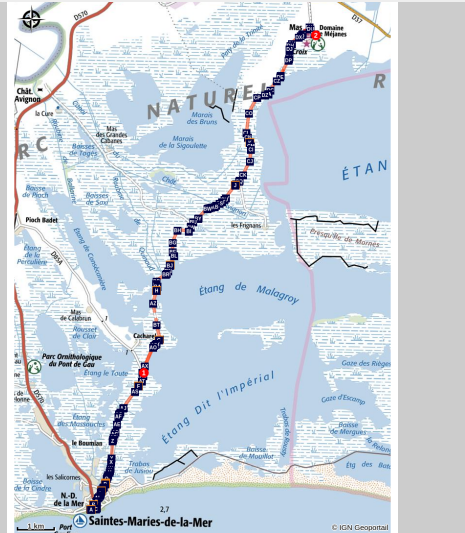


The draille de Méjanès by mountain bike

Arles



Vélo le long de l'étang du Vaccarès, sur la Draille des Cinq Gorges (David Lazin - PNR Camargue)

With endless ponds, fishermen and birds, freshwater marshes and high marshes marked by salt.

"This excursion bordering the natural reserve of Camargue through the draille de Méjanès, also called the draille des cinq Gorges is a beautiful retreat along one of the largest wetland reserves in Europe. On the trail riding my bike, all the originality and the heritage interest of these vast areas have revealed themselves, particularly the 283 species of birds including 269 of heritage interest. A true delight!"
Philippe Isenmann - RNP of Camargue

Useful information

Practice : BIKE

Duration : 4 h

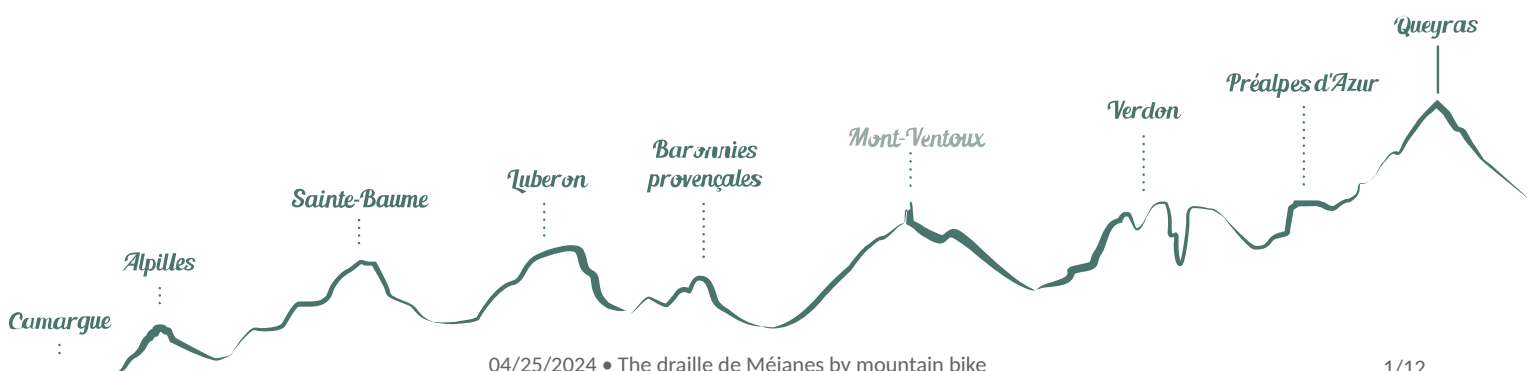
Length : 17.3 km

Difficulty : Easy

Type : Aller-retour

Themes : A lookout, a viewpoint, Fauna, Flora

Accessibility : Hybrid bike



Trek

Departure : Tourism office, Les Saintes-Maries-de-la-Mer

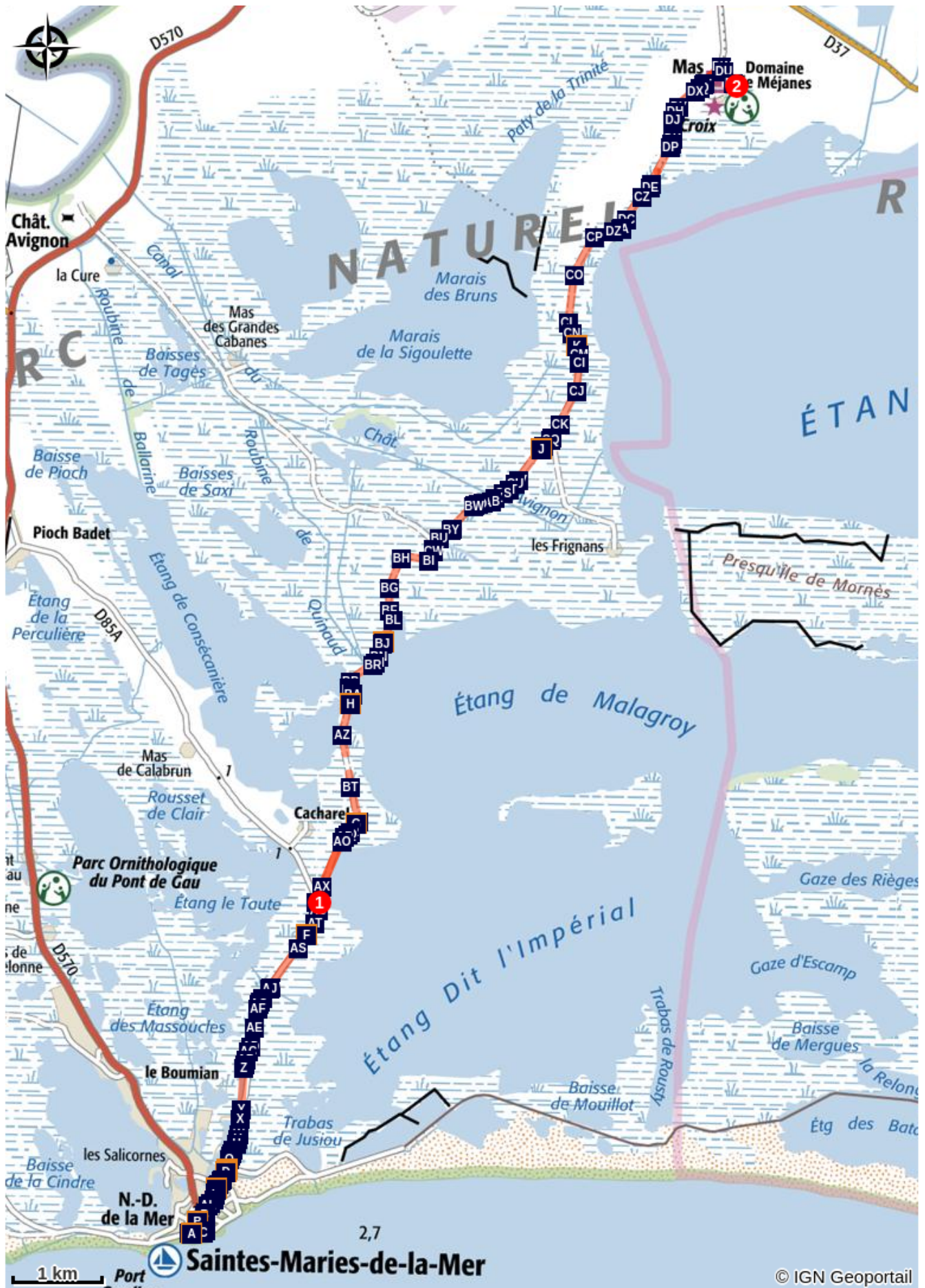
Arrival : Tourism office, Les Saintes-Maries-de-la-Mer

From the Tourism Office, on the Van Gogh avenue, go through the village towards the Cacharel road (D85A) for 4 km.


1- Before the Mas de Cacharel, take the dirt road on the right for 11 km.

2- At the Domaine de Méjannes, take the trail in the opposite direction and return to the starting point.

On your path...



 The arenas of Saintes-Maries-de-la-Mer (A)


 The eel (C)


 Le Bouvau d'Aubanel (E)

 Sweet and reed marshes (G)


 The Bois des Rièges (I)

 The Sansouire (K)

 The fortified church of Saintes-Maries-de-la-Mer (B)

 The Departmental Reserve of Imperialists (D)

 The Mosquito (F)

 Ponds or lagoons (H)

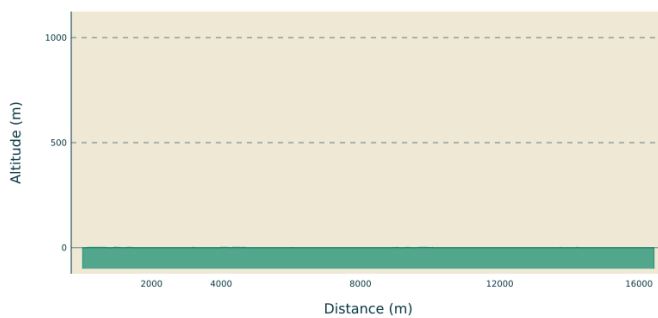
 The European bee-eater (J)

All useful information

AdVICES

Be careful, days of strong mistral wind may disrupt your trajectory.

Altimetric profile



Min elevation 0 m
Max elevation 0 m

Transports

Envia transport network Bus line 20 > Arles/Les Saintes-Maries-de-la-Mer through Albaron (free bicycle rack)...

Access

Saintes-Maries-de-la-Mer, at 37 km southwest of Arles through the D570 road. Starting point at the Tourism office.

An alternative to starting from the Domaine de Méjanès (Albaron) at 15 km from Arles through the D570 and the D37 roads (follow the sign Salin-de-Giraud for 2 km, then turn right to the domaine de Méjanès).

Advised parking

Car park on the Cacharel road

Information desks

OT Saintes-Maries-de-la-Mer - Tourisme en
Camargue



5 Avenue Van Gogh, 13460 Saintes Maries de la Mer

info@saintesmaries.com

Tel : 04 90 97 82 55

<http://www.saintesmaries.com/>

the Camargue museum

Mas du pont de rousty, 13200 Arles

info@parc-camargue.fr

Tel : +33 (0)4 90 97 10 40

<http://www.parc-camargue.fr/>

On your path...



The arenas of Saintes-Maries-de-la-Mer (A)

The arenas of Saintes-Maries-de-la-Mer were inaugurated in 1931 and can accommodate 4,500 people. They are built in hard material and have a circular shape.. Part of the arena collapsed in 1931, and was rebuilt in 1932. In 1985, they were redesigned by the architect André Marchetti. They offer three forms of bull races: the Camargue race, the Spanish race, and the rejón bullfight where the bull is fought by a rider, the rejoneador.

Attribution : Juliette Pimpier - PNR Camargue



The fortified church of Saintes-Maries-de-la-Mer (B)

True highlight of the Camargue (15 m), the church offers a breathtaking view of the village and all the Camargue. The 53 steps of a spiral staircase lead to the roof of the church where the panorama unfolds in all its splendour : up there, you can take advantage of a wide angle vision on the city, the sea and the ponds. Intense and sparkling blue of the Mediterranean Sea, purple hue of the Imperial pond The wind, the sun, the view of the calm expanse of the sea invite you to discover this landscape.

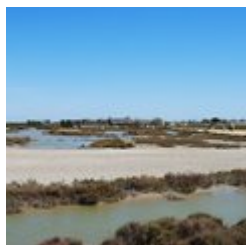
Attribution : Chloé Scannapiéco - PNR Camargue



The eel (C)

At the graus level (or passages), communication canals between the sea and the littoral ponds, you will find fish, towards the flooded sansouïre and the ponds or towards the sea. Migrating species include mullet, sea bass, but also sea bream, sole and especially eel. Born in the Sargasso Sea, she joined the Atlantic and Mediterranean coasts after a long journey. She comes to grow in the coastal ponds or rivers where she spends several years of her life.

Attribution : Julien Faure - PNR Camargue



The Departmental Reserve of Imperialists (D)

Classified Departmental Reserve, Imperial and Malagroy Ponds were acquired by the Departmental Council of Bouches-du-Rhone in 1964 to protect these fragile natural environments (2,770 ha) which are home to many species of birds. The fishing, a traditional activity in Camargue, is practiced in the Imperial reserve in a boat without motor which imposes the use, as formerly, of the "partygue" (pole). Fishermen are looking for shrimps, eels.

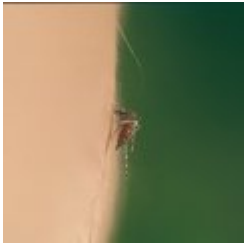
Attribution : Chloé Scannapiéco - PNR Camargue



Le Bouvau d'Aubanel (E)

The Baroncelli marquis, famous character of Camargue life, gave to his manade the name of Manade Santenco which means, in Provençal, manade of Saintes-Maries. At the death of the marquis, his son-in-law Henri Aubanel then manages the Santenco manade.. On June 15, 1996, the Saintes-Maries-de-la-Mer inaugurate the Henri Aubanel bouvau, a circular enclosure where bulls are grouped after selection. At the death of Henri Aubanel, his son Pierre manages the manade that he renames Aubanel Baroncelli Santenco manade.

Attribution : Juliette Primpier - PNR Camargue



The Mosquito (F)

There are 40 species of mosquitoes but only ten are biting. Females recover protein from the human blood that are necessary for the maturation of their eggs. They lay thousands of eggs on the soil dried up that are waiting, sometimes years, the rise of the waters to hatch. The mosquito is inconvenient for the man but it is useful to many species: dragonflies, fish, bats ... that feed on them. It is therefore an indispensable link in the Camargue biodiversity.

Attribution : Emmanuel Vialet - PNR Camargue



Sweet and reed marshes (G)

The "soft" marshes are characteristic of the upper Camargue, where the influence of salt is less marked. Consisting of a dense and high vegetation (reeds, cattails, bulrushes), they are a sanctuary for many birds (ducks, stilts ...), amphibians and reptiles. The reed beds, interspersed with open water, extend into these slightly brackish freshwater marshes. Habitat of waterfowl, some are cut in winter for harvesting the reed, which is used to cover the thatch roofs.

Attribution : Chloé Scannapiéco - PNR Camargue



Ponds or lagoons (H)

The Vaccarès, ruler of the average Camargue, and the lower salt ponds are the heart of the Camargue. Separated from the sea by a sandy cordon, they are in intermittent communication with the sea. A favourite place for birds and fish, they play a vital biological role in the delta and play a major role in water management. Millions of young marine fish come here to spend the first year of their lives before returning to the sea.

Attribution : Chloé Scannapiéco - PNR Camargue



The Bois des Rièges (I)

Located in the heart of the Camargue National Nature Reserve, the Bois des Rièges has been classified as an integral reserve since 1927. The wood consists of 8 massive wooded dunes, the last vestiges of a Camargue coastline some 3000 years ago! There is also: large juniper groves, centennial Phenicia and umbrella pines. No incongruous remains that dot so often Provençal nature, the Bois des Rièges is the last space of the Camargue where nature has retained its rights.

Attribution : Chloé Scannapiéco - PNR Camargue



The European bee-eater (J)

Brown top, blue-green underside, black-necked yellow throat, wings and olive-green tail, one would believe the bee-eater escaped from an exotic aviary. He digs his nest in the embankments or canal banks where he lives in the colony. His name comes from his diet, composed of big insects: dragonflies, beetles and wasps that he can seize without being bitten by his long beak. Agile, he crushes his victims against his perch, ejecting the venomous sting, before offering it to his little ones.

Attribution : Chloé Scannapiéco - PNR Camargue



The Sansouïre (K)

Representative landscape of the lower Camargue, the sansouïre constitutes an environment where salt exerts a total influence. She lives to the rhythm of the seasons: large body of salt water in winter, mudflats in spring and autumn, cracked ground and salt-white desert in summer. The vegetation, low and sheepish, is brown in winter, green in spring and red in autumn. Only a few specialized plant species develop there, because of the strong presence of salt: salicornia, soda, obione, saladella .

Attribution : PNR Camargue



- En aucun cas les auteurs des contenus de ce site ne sauraient être tenus pour responsables de problèmes ou d'accidents sur les itinéraires cités.
- Cependant, nous comptons sur vous pour signaler toutes contradictions importantes entre cette fiche et le terrain.
- Pensez également à signaler les éventuels problèmes rencontrés pendant votre balade sur <http://sentinelles.sportsdenature.fr> (erreur de balisage, panneau défectueux, pollution, conflit d'usages...).
- La vente de cette fiche est autorisée au coût d'impression.
- Ne pas jeter dans la nature.

L'outil Geotrek a été financé par l'Union européenne, le Parc national des Ecrins et le Parc national du Mercantour.

Le projet Chemins des Parcs est financé par la Région Provence-Alpes-Côte-d'Azur et les Parcs naturels régionaux des Alpilles, de Camargue, du Luberon, du Queyras et du Verdon.

Ce projet partenarial rassemble également le Comité Régional du Tourisme, les agences départementales de développement touristique, les offices de tourisme et les syndicats d'initiative.

- The authors of this website will in no case be held responsible for problems or accidents on the routes mentioned.
- We count on you to point out any inconsistency between this content and the field itineraries
- Please report any problems encountered on the routes (route marking problems, defective panels, pollution, conflict of uses ...) on <http://sentinelles.sportsdenature.fr>
- The sale of this sheet is authorized at the cost of printing
- Please don't litter

The Geotrek tool was funded by the European Union, the Ecrins National Park and the Mercantour National Park.

The Chemins des Parcs project is funded by the Provence-Alpes-Côte-d'Azur Region and the regional nature parks of Alpilles, Camargue, Luberon, Queyras and the Verdon.

This project was developed in partnership with the Regional Tourism Committee, the departmental tourist development agencies, and tourist offices.

www.cheminsdesparcs.fr

*Tours et détours dans les Parcs naturels régionaux
de Provence-Alpes-Côte d'Azur*

Avec le soutien de

